



France & Colonies Phîlatelist



USPS #207700

THE PIROGUE POST ON THE OGOOUÉ RIVER OF GABON

By Robert G. Stone

The use of pirogues (large log canoes) for transport has been traditional for ages on the rivers of Africa. Although overland travel by porters or camels was also widely used, in the heavily forested regions it was quicker and easier to paddle the rivers, especially in the rainy season. We know of much evidence that settlements and plantations along the rivers generally depended on pirogues to take and receive mail via the nearest postoffice. On some larger rivers steam or motor launches or steamboats were introduced and carried mail, either loose or closed.* The pirogues also carried letters and packages for parties along the route and in some cases closed mails for the regular post.

However, river transport was not usually indicated specifically on mail so

*For a fascinating account of mail carrying on the Congo-Oubangui rivers in the 1890s-early 1900s see P. Raynaud, "The mysterious Haut-Oubanghi mission locals," *Scotts Monthly Jn.*, Sept. 1980.

TABLE OF CONTENTS

The Pirogue Post On the Ogooué River of Gabon—Stone	Front
The Use In the Colonies Of the Hollow-Numeral "35" Mark—Tristant	55
Announcements and News	58
The Stamp Program for 1981	63
The Regular Issues of France Since 1960—Luft	64
A Chronicle Of French Campaigns—Waugh and Luft	69
Current Journal Articles	81
New Books, Pamphlets and Catalogues	82
For the Record	83
F. and C. P. S. Official News	89
New Members, etc.	93

carried, by means of special postmarks. There were exceptions, examples of which we have noted and illustrated in our article in FCP for Feb. 1980, along with references to literature, and in a note in FCP for Jan. 1979.

The Ogooué River, which flows from East to West across the middle of Gabon, with many tributaries extending into 80% of the territory, has long been the scene of lively pirogue activity, and the middle and upper reaches have been used for mail even in recent years. Some roads have been built across the colony, but they are difficult in the rainy season so that local bush-service airplanes are widely used now for freight, passengers, and mail (since 1959 via Trans-Gabon Airlines—see note in FCP #122, p. 91).

Around 1944-1945 the Gabon postal service was contracting with native piroguers to carry mail, freight, and administrative personnel on the Ogooué above N'Djolé and Lambaréné for several 100 km. Mail sent from postoffices on these stretches of the river via pirogues received a handstamp in rectangle PAR PIROGUE POSTALE. This service did not apparently become generally known to philatelists and examples of its mark are rare. The first we heard of it was from a note by our former member Everel Keys in Stamps for 18 Jan. 1961, mentioning that he knew of three covers with the mark from Lastourville in 1944. Neither he nor one of his correspondents in Africa could get the postoffice there to respond to their inquiries for further information.

Then in Le Monde for March 1971 a correspondent described a letter he had which bore the pirogue postmark. It was sent from Booué, far above N'Djolé, to Mouila on the southern branch of the river, a distance of 350 km, which was covered in 6 days (60 km per day!). The letter had to go downriver from Booué to Lambaréné then up the south branch (Ngoumie River) past

FRANCE & COLONIES PHILATELIST

USPS #207700

Published quarterly by the

FRANCE AND COLONIES PHILATELIC SOCIETY, INC. (N.Y.)

Affiliate No. 45, American Philatelic Society

April 1981 — Vol. 37, No. 2, Whole No. 184

Second-class postage paid at Lawrence, Kansas

Office of Publication: 821 Vermont Street, Lawrence, Kansas 66044

Dues \$5.00 per year, Parent Chapter \$6.00 (plus 50¢ admission fee)

\$4.50 of which is for a subscription to the F&C Philatelist

All communications about membership, subscriptions, activities, and services of the Society be sent to the Corresponding Secretary, Walter E. Parshall
103 Spruce St., Bloomfield, N. J. 07003

All contributions to and questions concerning the contents and policy of this magazine should be sent to the Editor:

Robert G. Stone, P. O. Box 356, Blue Ridge Summit, Pa. 17214

President, Dr. Edward J. Grabowski

Vice President, Peter Blank

Treasurer, Beatrice M. Berner

Recording Secretary, Don Shannon

Corresponding Secretary, Walter E. Parshall

Editor, Robert G. Stone

Directors—Class of 1980:

Stan Luft, Edw. Grabowski

Class of 1981:

Marc Martin, John Lievsay

Class of 1982:

Ira Zweifach, Eric Spiegel

Class of 1983:

Stanley Luft, Martin Stempien

Postmaster: Send form 3579 to 821 Vermont St., Lawrence, Kans. 66044



Fig. 1. The mandat from Booué, Gabon, to Rouen, France, April 1945, with the "Par Pirogue Postale" handstamp. (Ca. 10% reduction)

N'Gounia to Mouila. He asked for any information about the service and the mark. A reply in *Le Monde* for Feb. 1972 only remarked that the piroguiers of the Ogooué had a great reputation all over Africa but offered no information as to whether the mark was "official" or not.

A letter from a Mon. Vejux, a postal official in the checks center at Rouen, to Philatélie (Oct. 1976) stated he had seen a mandat from Booué to Rouen which had come into his office bearing the pirogue postmark. His inquiries to Gabon had gone unanswered. Inquiry to the Musée Postal brought out a short article by Mon. G. Kling, a former official in the postal administration of the Ministère de la France d'Outre-Mer, published in *Bull. de la Soc. des Amis du Musée Postal*, 3rd Qtr 1975 (#47). He illustrated the mandat document of Mon. Vejux and gave some explanation, which we summarize herewith, and reproduce the mandat and a map.

The document was sent by the special Agent Postal at Booué who handled mandats and was responsible to the Colony Treasurer; he was separate from



Fig. 2. Map of the Gabon showing the Ogooué River and places mentioned in text.

the regular postoffice there. The mandat was for 5000Fr, sent to a Mlle Lucie Eckendorff in Rouen. The mandat form was franked with a 10Fr AEF France Libre stamp (Dulac type), cancelled Booué 11 April 45 and a Par Avion label was also affixed. The PAR PIROGUE POSTALE handstamp was struck across the top of the form, and there is a registry label (registry required in sending a mandat of large sum).

Kling, referring to his map, notes that the mail (for this place) was directed to N'Djolé, the P. O. to which Booué was attached, by a pirogue under contract to the Administration and which besides the mail carried material and Administrative personnel. The chief of the piroguiers was one Mona Kéma of the Adouma tribe. The pirogue descended the Ogooué to N'Djolé where the river is joined by the Okano tributary coming in from the north. It became possible to descend the river from there to Port Gentil at the mouth by river boats of the Chargeurs Réunis company (a Marseille shipping firm),

passing by Lambaréné on the way (site of Albert Schweizer's hospital). From Port Gentil the mails were forwarded by coastal steamers to Libreville where they were put on the packets for France. Kling had no data on the frequency of the pirogue service but notes it was a very common mode of transport in Africa before the highway network was as well developed as now.

Since the letter described in *Le Monde* in March 1971 went all the way down to Lambaréné, we wonder if perhaps from N'Djolé to Lambaréné it was taken by the steamer and thence by another pirogue up to Mouila.—R.G.S.

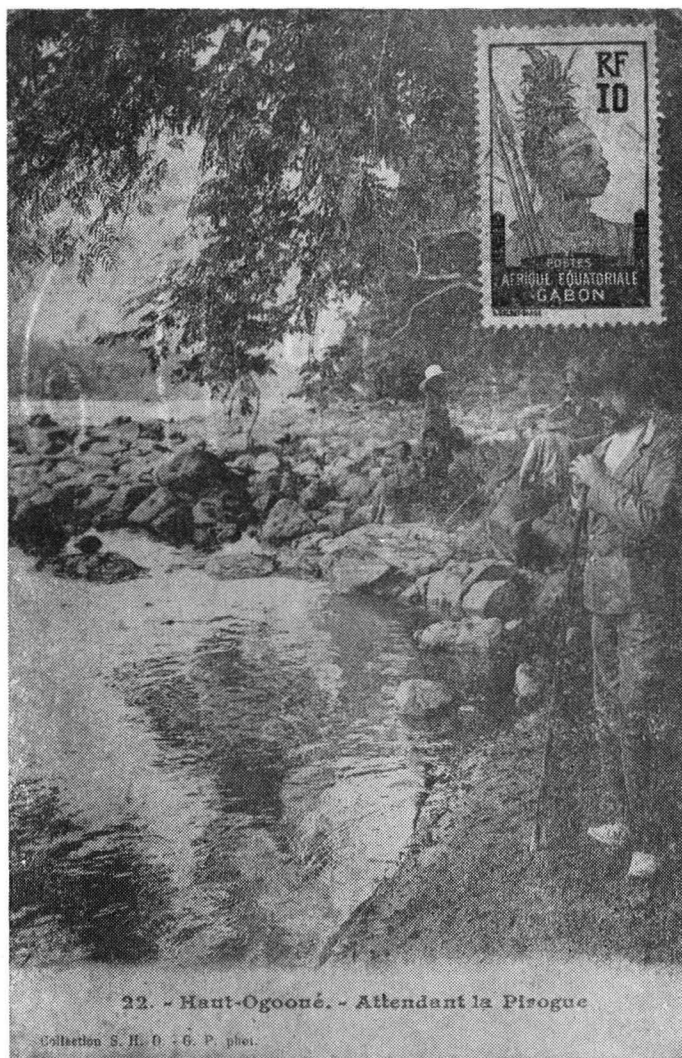


Fig. 4. Post-card view of the Haut Ogooué, showing a planter and several natives standing on the river bank, according to the title, "waiting for the pirogue." Ca. 1905.

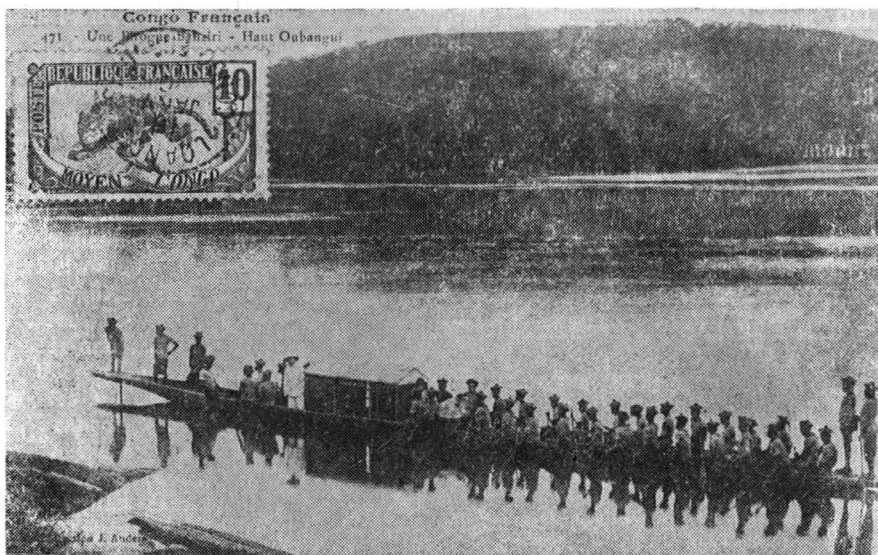


Fig. 3. Post-card view of a pirogue on the Haut-Oubangui River, ca. 1905.

PHILATELIC SECURITY*

By J. West

In my professional capacity as a police officer it is my experience that stamps and stamp collections are usually difficult to identify as being one's property when they are recovered by the Police. Could I, therefore, invite fellow members to consider removing all the leaves from their album (assuming it is loose-leaf!) and press all the leaves together to re-form the spine. Then, using a felt-tip pen, write their name along that spine.

It will do nothing to prevent the theft of property, members must take their own precautions to avoid that, but, in the sad event of loss, it does make it easier to trace the owner. By marking the pages as described, it offers two possibilities. Firstly the casual thief, who takes the whole album, won't see the marking (because it's not visible) while the local dealer can see at a glance that the prospective seller is not the owner. Secondly, the expert (or more professional) thief who breaks the album down into pages can still be caught by aligning the marks on the edge of the paper to see if they make up the name of the loser. Members will find that, unless they remove their binder or cover, the writing cannot possibly be seen, and could in no way affect the use of these same leaves for a display or exhibition. This is even more so if they use a yellow felt tip.

I think the idea has its merits and, who knows, some member might be very pleased one day that he took my advice.

*Reprinted from Newsletter of France & Colonies Phil. Soc. (U. K.), #37, Oct. 1980.

THE USE IN THE COLONIES OF THE HOLLOW-NUMERAL "35" MARK

By Henri Tristant

Académie de Philatélie, Paris

We know that the Loi de Finance of 18 May 1850, effective 1 July 1850, raised the tarif on a simple letter (one weighing up to 7.5 gr) from 20c to 25c. The rate on correspondence exchanged between France and its colonies as a consequence was raised also and went from 30c to 35c, which included the 10 centime maritime tax (so-called "décime de mer") that was not changed, that was applied when the transport was in sailing vessels.

This Loi had the following effects:—

1. The issuance of a stamp in the Ceres type of 25c, needed for franking, in the interior, of a simple letter.

2. The creation and use of a handstamp in hollow-numeral style for "25" (c), expressing the postage due on simple letters of interior correspondence, which eventually included the coastal maritime service. It is described notably in R. Salles Tome I of "La Poste Maritime," p. 105 (Fig. 403).

3. The creation of a different hollow-numeral handstamp, one for "35" (c), expressing the tax due on a simple letter sent obligatorily unfranked from the colonies to the Metropole. It is described in Salles Tome I, p. 38 (Fig. 199).

From the effective date of the 18 May law, 1 July 1850, the correspondence coming from the colonies thus was taxed at 35 centimes for a simple letter; at first, for about a year, marked by a manuscript notation of the amount of the tax; then later by the application of the hollow-numeral stamp, strikes of which are not known prior to 14 June 1851. (See Fig. 1)

Still later, as a consequence of the Loi of 3 May 1853, the same "35" mark



Fig. 1. Unfranked cover from Martinique 8 March 1853 to Bordeaux, with "35" hollow-numeral due mark struck in France 2 May 1853 in accordance with the Law of 18 May 1850.

(22)

MODELE N° 1.

*Modèle des taxes à apposer sur les lettres non affranchies expédies
des colonies françaises pour la France et l'Algérie par la voie
des bâtiments à voiles.*

35^{re} 35

Les taxes de 60^c à 4^f 10^c inclusivement devront être exprimées en
décimes conformément aux modèles ci-dessous.

6 11 91 91 01

A partir de 5^f 10^c les taxes devront être exprimées en francs et dé-
cimes conformément aux modèles ci-dessous.

5^f 6^f 7^f 8^f 9^f
10^f 11^f 19^f 19^f 10^f

Fig. 3. The "Modèle 1" in the instructions to Law of 3 May 1853.

ANNOUNCEMENTS AND NEWS



◆ The 1.20F Microelectronics CNET at Grenoble stamp was issued on Feb. 5. On Feb. 7 the 1.40+0.30 Soeur Anne-Marie Javouhel came out, on the 14th the 1.40+0.30 Jacques Offenbach. On 28 Feb. the 4.00 work of Albert Gleizes appeared. On 7 March the Journée du Timbre 1.40+0.30 "La Lettre d'Amour" of Goya was issued. On 14th March an art work, "L'Eau" by Virginie Soura (won a contest for designing by children). On 28 March the four stamps for Great Accomplishments: 1.20 for Biology, 1.40 for New Energy Sources, 1.80 for Undersea, and 2.00 for Telematics. On 23 March the 2.50



Chateau de Sully at Rosny sur Seine was issued. On 6 April the 1.50 La Relieur will appear; on 11 April the 1.70 Nîmes, and on 18 April the "La Sente du Chou" of Pissarro.

On 5 May the 1.40 Bourrée Croisée and 2.00 Sardane (Europa issues) will be issued; on 18 May a 2.50 Cent. de l'Ecole de St. Maixent; on 25 May the 2.00+2.00 La France et Paris (for Philexfrance '82)—sold only in pairs, the 1.40+0.30 R. P. Teilhard du Chardin and 1.20+0.30 Louis Armand; on 1 June a 2.20 for the Presse.

◆ On 23 March the 1.40 Bordes de Mereig of Andorre was issued.

◆ The Andorre Europas, 1.40 Ball de l'Ossa, and 2.00 El Contrapas will be issued on 18 May.

◆ Painter Yacov Agam, whose "Message de Paix" was the subject of the 4.40F stamp issued last Oct. 4, had an exhibition of his works recently at the Guggenheim Museum in New York. He was later received by Pres. Reagan to whom he presented a copy of his stamp. Reagan admired the stamp and asked for some signed copies to give to his children.

◆ A correspondent of L'Echo noted that the 1.80 Sabine issued in Oct. 1979 was not printed in blue as it should have been to conform to the UPU color scheme. He got an explanation from the Director of Posts: The French administration has tried to follow the UPU scheme as far as possible, but the increasing use of multicolor stamps to harmonize the subjects has tended to cause departures from the scheme. Moreover, it is not customary to respect the scheme when the franking for a 20 gr. letter on internal mail is 1.30 (extension of the domestic rate) or 1.60 (preferential regime). With the multiplication of special tarif regimes and the great variety of tariffs (without mentioning commemoratives), the colors recommended by the UPU Congress of Washington 1897 have lost much of their interest. But it is not ruled out that the UPU blue may not be used again in the future.

◆ With the 6 new Sabines issued on 10 Jan. there are now a total of 25 Sabine values in use, which the PTT claims permit the frankings of up to 9.95F with a maximum of only 4 stamps. It is expected that the new 1.40

value will be issued in booklets of 5, 10, and 20, and the 1.20 value in booklets of 20 only. These two values will also be issued in coils of rolls of 1000.

◆ Postage rates for certain categories of mail posted in bulk were changed on 11 January; the 4 new precancel stamps specially issued for these rates in the Historic Monuments Series are: 0.88 Le Chapelle Impériale at Ajaccio, 1.14 L'horloge Astronomique at Besancon, 1.84 Ruines du Chateau at Coucy-le-Chateau, 3.05 La Grotte de Font-de-Gaume at Les Eyzies-de-Tayac. They were available in the latter half of January. Sold only in multiples of 100, with a 1,000 minimum for each category, but can be had in retail from the philatelic windows or the Service Philatélique. The stamps are in horizontal format 23x17 mm, designed and recess-engraved by Durrens.

◆ Notice on Philexfrance '82: Our member Raymond L. Gaillaguet is the U.S. Commissioner. He has prospectuses and application forms which he will send out on request. The deadline for preliminary applications is 15 June—so if you are thinking of exhibiting write to Ray now: 221 Waterman St., Providence, R. I. 02906.

◆ Anita and Stan Luft won a Gold for their Napoleonic Grande Armée exhibit at the Philatelic Fiesta, APS National Show, at San Jose, Cal. We are shocked to hear that Anita suffered a stroke in the 2nd week of March—our best wishes for a good recovery.

◆ Member Steven C. Walske will give a talk on Balloon Mails to a regional meeting of the FCPS on Sunday, October 11, 2 p.m. in connection with the Philatelic '81 Show at Boston that weekend.

◆ Leon Dubus has resigned as President of the Académie de Philatélie and M. Lipschutz elected in his place. Lipschutz is well-known as active in international exhibits and juries and as the premier specialist in Russian philately. M. Dubus, long the doyen of French philately, in view of his age and health has been gradually retiring from his varied philatelic positions.

◆ In case you wondered what those streaks across George Guzzio and Bob Stone were due to in the photo on p. 38 of the Jan. FCP, well that was the carrying strap of Adrien's camera swinging back and forth in front of the lens—he was in a hurry!

◆ At the Salon d'Automne last November, the Grand Prix des Territoires d'Outre Mer was awarded to the 4Fr La Victoire stamp of TAAF done by Andreotto. The Grand Prix des Pays d'Expression Française was given to the 480F Tête de Christ of Mali done by Claude Haley. The Grand Prix Européen went to the 6Fmk Kaspaipha stamp of Finland. The Jury for the Prix Jean-Goujon for the entire non-philatelic work of a stamp artist chose Claude Andreotto.

◆ The painters and engravers who work on French and French community stamps have formed an "Association de Peintres-graveurs Créateurs de timbres-poste," with Pierre Bequet as President, Georges Betemps Vice Pres., Jacques Jubert as Secretary, Pierrette Lambert as Treasurer, Claude Andreotto in charge of expositions, René Quillivic in charge of public relations. The purpose is to guarantee the quality of the creation and realization of the stamps. The Association will organize shows to demonstrate the efforts of the engravers, issue an annual publication of high quality, and periodical publications. Other people than stamp designers-engravers can join the Association as Benefactor Members, at 30Fr dues for 1981; the benefactors will re-

ceive invitations to all the shows and receive each year a souvenir signed by the author. Write to DEL GSC, 9 rue Quatrefages, F75005-Paris.

◆ The PTT has equipped nine POs in Paris with the new self-service franking devices, which permit franking all ordinary objects to domestic destinations.

◆ A firm in Paris was recently convicted of violating the postal monopoly, fined 1,080Fr and 1,555Fr damages to the Post.

◆ The PTT is forever taking public opinion polls to see how it's doing. From a sample of 1000 interviews in December, 72-79% were satisfied with the PTT in general, 14% said it functions very well, 67% rather well; and 82% said they trusted the PTT to deliver a letter or package. The majority think of the PTT as mainly a postal service and are ignorant of its other activities.

◆ The tremendous philatelic library of our late member George Turner, is being auctioned by Roger Koerber on May 1-2. While the collection is mainly in U. S. publications, there are a number of classic French books and files of French journals. The catalogue can be obtained from Roger Koerber, 605 Northland Towers West, Southfield, Mich. 48075, for \$2 to cover the postage and handling.

◆ In its annual summary of the stamp output of France for 1980, Le Monde gives us some statistics and comments. Stamps programmed for 1980 for the Moscow Olympics and for Franco-Belgian PTT cooperation never were issued, and likewise several series begun in previous years (Regions, e.g.) were not continued. Eight stamps out of the total of 53 for 1980 were in helio, 45 in recess, and 4 with surcharge in typo. Total face was 101.20Fr, including 2.70F in surtaxe for the Red Cross—this was quite a bit higher than in the previous years—inflation no doubt. Average face was 1.91 vs 1.46 for 1979. There were 2 small stamps and 6 large ones for “regular use,” 27 commemoratives (one airmail), 9 surtaxe, 4 precancels, and 5 “official” (service). The denominations and quantity of each were: 0.76 (1), 0.90 (1), 0.99 (1), 1.10 (2), 1.20 (3), 1.30 (7), 1.40 (6), 1.50 (2), 1.60 (3), 1.70 (1), 1.80 (2), 2.00 (6), 2.20 (1), 2.30 (1), 2.50 (3), 2.65 (1), 3.00 (4), 3.20 (1), 4.00 (3). Seventeen stamps were both designed and engraved by the same artist, 5 more artists only engraved, and 10 only designed. The artists were: Agam (1), Andreotto (2), Bequet (2), Betemps (2), Boyer (1), Combet (2), Decaris (2), Delpech (1), Dessirier (1), Durrens (5), Forget (3), Gandon (2), Gauthier (1), Goffin (3), Guillaume (1), Haley (2), Jubert (3), Lacaque (3), Lambert (1), LeNoir (3), Mathieu (1), Monvoisin (3), Pheulpin (5), Quillivic (2), Sainson (1), Ubac (1), Vasarely (1), Winckler (1), and At  lier du Timbre (4). Most of these artists had done work for the PTT in previous years, some for many years.

◆ Member James R. Taylor has been appointed General Chairman of CAL-TAPEX '81 annual stamp show and bourse of the Calgary Philatelic Society. Show dates are September 25-27, 1981, at the Calgary Convention Centre.

◆ The Cardinal Spellman Philatelic Museum, Inc., in Weston, Mass., held its 5th Annual Literature Fair and Stamp Exhibition on April 11-12; philatelic literature from any source was put on display and judged. The Fair included a “China Trade” exhibit featuring rare oriental material, artifacts and memorabilia, and was the occasion for the issue of the Museum's new publication by Arthur White on Hong Kong Postal History. The purpose of the Fair

was to raise money for the expansion of the Museum library.

◆ RIPEX will be held this year on Sept. 18-20 at Providence. Good place for first-time French exhibits to try out, as French material has always done very well at RIPEX. We will have more specific announcement in the July FCP.

MEMBERS APPEALS

(Members Advertising)

OFFER:—I sell accumulations of "PUBS," used only, up to 150 different, for \$25 each lot. Mrs. Lambert, 2043 Cardinal Way, Fairfield, Calif. 94533 (Mb. #2106)

WANTED:—Used France: Scott #41b 5c emerald with major faults, for color comparison. In exchange, my faulty used Scott #37 (5Fr gray lilac) with torn corner. Leo E. Dubois, 9 August Aly #305, San Francisco, Calif. 94133 (Mb. #1877)

OFFER:—Selling my collection of French colonies in 3 vols. of Scotts French Africa Albums. Many issues but mint ones are mostly stuck down. Inspection invited; phone 301-822-3989. Paul C. Higgins, 402 Goldsborough St., Easton, Md. 21601 (Mb. #1853)

OFFER TO EXCHANGE:—I offer good covers and stamps of the following countries and colonies:—Togo, Cameroun (incl. Br.-Fr. occupations), Tunisia, Algeria, Morocco, Syria, Memel, Monaco, Guadeloupe, Martinique, Reunion, TAAF, China Wallis and Futuna Guyana India, Indochina, Free French Forces mail and stamps, Mauritania, Anjouan, Comorros, St. Pierre-Miquelon (very strong in covers and cards), Fr. and Sp. Andorra (covers, postcards, rare perf. varieties). A few rare Zeppelin covers. Will send approvals. Wanted:—Stationery of all French colonies, mint and used, perforated issues of France on covers, booklets of France and colonies. Stamps and covers of Tahiti, French Oceania, and French Polynesia: imperforates and DeLuxe proofs (no essays), missionary letters, post cards and odd material. Also willing to buy above types of material. Send approvals, offers or photocopies. Mrs. Lambert, 2043 Cardinal Way, Fairfield, Calif. 94533 (Mb. #2106)

WANTED:—Fezzan-Ghadames: (a) overprinted issues only mint, (b) used either with legible cancels or on cover, (c) color proofs, (d) De Luxe proofs, (e) artist and other die proofs. Please contact me before any shipment. Dr. Rene Amon, 6007 No. Sheridan Rd., Chicago, Ill. 60660 (Mb. #1891)

WANTED:—I maintain a new issues account with the French PTT for myself and a few local friends. One opening has developed and I need another subscriber. Anyone interested in French new issues at face plus 5-10% (postage)? Please contact me ASAP for the details. I need but one subscriber and have no plans to increase the account—it is too complicated already. Ed Grabowski, 741 Marcellus Drive, Westfield, N. J. 07090. (Mb. #1469)

OFFER:—I have for sale a large attractive selection of 19th century French material plus some better later items. Also, an extensive precancel collection including dated blocks, millésimes, on cover, etc. Would possibly consider trades.—Robert A. Hamilton, P. O. Box 35126, Vancouver, B. C., Canada V6M 4G1 (Mb. #1483)

THE STAMP PROGRAM FOR 1981

As announced last December 16, the issues envisaged are:

- I. Stamps With Surtax (9):
 1. Journée du Timbre: La Lettre dans l'Art, "La Lettre d'Amour" of Goya.
 2. Celebrated Personages (6):
Teilhard du Chardin, Jacques Offenbach, Soeur Anne-Marie Javouhey, Louis Juvet, Pasteur Marc Bayguer, Louis Armand.
 3. Red Cross (2):—two stained glass windows of Fernand Leger in the Sacré-Coeur at Audincourt.
- II. Stamps Without Surtax (34):
 1. Artistic Series (2):
"La Senté du Chou" of C. Pissarro
"Composition 1920/23" of Albert Gleizes
 2. Philatelic Creations Series (2):
"Les Plongeurs" of Ed. Pignon, and "Alléluia" of Alfred Manessier
 3. Europa (2): on a folklore theme (CEPT)
 4. Touristic Series (5):
Maison Carré de Nîmes, Saint-Emilion, Basilica of Sainte Anne d'Auray, Abbaye de Vauclaves, Crest (Drome).
 5. Great Accomplishments Series (5):—Biology, New Energy Sources, Ocean Depths, Microelectronics, Telematics.
 6. Commemoratives and Miscellaneous: (17):
Philexfrance '82 (2)
"L'Eau" (childrens art)
Congrès de F. S. P. F. at Vichy
Métiers d'Art: La Relieure
Army stamp: Centenary of Ecole Militaire Saint Maixent
Salon de l'Aéronautique et de la Space
Centenary of La Caisse d'Epargne
Stamp for the press (350th anniv. founding of Gazette de France, cent. of death of Emile Girardin, 100th anniv. of Law on freedom of press)
Bimillenaire of death of Virgil
Centenary of founding of Ecole des Hautes Etudes Commerciales
Campaign for highway safety
Centenary of Ecole Laïque
World champion of escrivel
Protection of shores
45th Confère Internationale de P. E. N. Club
150th anniv. of formation of Ecole Navale
 7. Airmails (1): Costes et La Brix

Andorre Stamp Program for 1981

Ten stamps are planned:

- Protection of Nature (2 birds)
- Europa (2 on a folklore theme: Bear dance, "El Contrepas")
- Andorran architecture
- Art: detail of an embroidery on a chassuble at St. Martin
- Sports: Champions of World of escrivel
- Commemoratives: (3)
International year of handicapped persons
International Decennial of potable water
Creation of the Andorran Red Cross

THE REGULAR ISSUES OF FRANCE SINCE 1960, ACCORDING TO THEIR NORMAL POSTAL USAGE

By Stanley J. Luft (#915)
(of the Académie d'Etudes Postales)

VII. Typographed precancelled "Gallic Coin" stamps (legend: REPUBLIQUE FRANÇAISE) of 1964-1975

A. Issue of May 1964

o,10

The o,10 emerald and bistre (Scott 1096, Cérès Préo 123) was printed from 3 plates between 29 Nov. 1963 and 3 Feb. 1966.

Domestic usage (Special Tariff of 15 May 1964):

*Printed matter and samples, to 50 gm, special bulk rate.

Suppressed 31 July 1966.

o,25

The o,25 lilac and brown (Sc 1098, Cs Préo 126) was printed from one plate between 26 Dec. 1963 and 12 April 1968.

Domestic usage (id.):

*Printed matter and samples, from 50 to 100 gm, special bulk rate.

Suppressed in January 1969?

o,50

The o,50 bright blue and brown (Sc 1099, Cs Préo 128) was printed from one plate between 18 Dec. 1963 and 8 Feb. 1968.

Domestic usage (id.):

Printed matter and samples, from 100 to 200 gm, special bulk rate.

Suppressed in January 1969?

B. Issue of 17 Oct. 1966

o,15

The o,15 orange and bistre (Sc 1097, Cs Préo 124) was printed from 3 plates between 31 Aug. 1966 and 17 April 1968.

Domestic usage (Special Tariff of 1 Aug. 1966):

*Printed matter and samples, to 50 gm, special bulk rate.

Suppressed in January 1969?

C. Issue of 10 March 1969

o,22

The o,22 emerald and violet (Sc 1240, Cs Préo 125) was printed from one plate between 27 Jan. 1969 and 5 Aug. 1970.

Domestic usage (Special Tariff no. 1 of 13 Jan. 1969):

*Printed matter and parcels, to 50 gm, special bulk rate.

Suppressed 30 June 1971.

o,35

The o,35 rose and ultramarine (Sc 1241, Cs Préo 127) was printed from one plate between 11 Feb. and 25 July 1969.

Domestic usage (id.):

*Printed matter and parcels, from 50 to 100 gm, special bulk rate.

Suppressed 30 June 1971.

o,70

The o,70 violet-blue and brown (Sc 1242, Cs Préo 129) was printed from one plate 6-7 March and 22-23 April 1969.

Domestic usage (id.):

Printed matter and parcels, from 100 to 250 gm, special bulk rate.
Suppressed 30 June 1971.

D. Issue of 1 July 1971**o,26**

The o,26 violet and brown (Sc 1315, Cs Préo 130) was printed from one plate, 26 April-2 June 1971.

Domestic usage (Special Tariff No. 1 of 1 July 1971):

*Printed matter, to 20 gm, special bulk rate.

Suppressed February 1975 or earlier.

o,30

The o,30 bistre and brown (Sc 1316, Cs Préo 131) was printed from one plate, 2-15 April 1971 and 11-15 Jan. 1974.

Domestic usage (id.):

*Printed matter, from 20 to 50 gm, special bulk rate;

*Parcels, to 50 gm, special bulk rate.

Suppressed February 1975 or earlier.

o,45

The o,45 dull green and brown (Sc 1317, Cs Préo 132) was printed from one plate, 6-19 April 1971.

Domestic usage (id.):

Printed matter and parcels, from 50 to 100 gm, special bulk rate.

Suppressed February 1975 or earlier.

o,90

The o,90 red and brown (Sc 1318, Cs Préo 133) was printed from one plate, 22-26 April 1971 and 21-23 Feb. 1972.

Domestic usage (id.):

Printed matter and parcels, from 100 to 250 gm, special bulk rate.

Suppressed February 1975 or earlier.

Interlude II. Commemorative stamps of 1965-1968

Scott	Cérès		Dates of Issue	No. printed (in millions)
o,25 values				
1119	1448	House of Youth and Culture	10-12 April '65-12 Feb. '66	11.24
1133	1460	Reforestation	2-4 Oct. '65-18 June '66	12.46
1136	1463	Air Academy	6-8 Nov. '65-17 Sept. '66	8.505
1155	1481	Pont-St.-Esprit	23-25 April '66-21 Jan. '67	9.795
1156	1482	St. Michel and Dragon	30 April-2 May '66-4 Feb. '67	10.16
1157	1483	Reunion of Lorraine and Barrois	6-9 May '66-4 Feb. '67	9.61
1162	1489	Oléron Bridge	18-20 June '66-11 March '67	10.805
1180	1524	Grand Pont, Bordeaux	6-8 May '67-17 Feb. '68	15.485
1183	1527	Alfort Veterinary School	27-29 May '67-24 Feb. '68	13.165
1194	1532	Bir-Hakeim Anniversary	7-9 Oct. '67-21 Sept. '68	8.81
1203	1548	Road Safety	24-26 Feb. '68-14 Dec. '68	9.555

1214	1561	Rambouillet and Black Forests	18-20 May '68-8 Feb. '69	9.63
1217	1564	Pont de Martrou, Rochefort	20-22 July '68-12 Apr. '69	9.615
1218	1565	Airmail route, Paris-St. Nazaire	17-19 Aug. '68-19 Apr. '69	9.75
1219	1566	Tower of Constance	31 Aug. 2- Sept. '68-17 May '69	7.40
1222	1570	Union of Corsica to France	5-7 Oct. '68-23 July '71	17.00
1226	1576	50th Anniv. of Armistice	9-12 Nov. '68-25 Oct. '69	8.12

Domestic usage (Tariff of 18 Jan. 1965):

*Postcards.

Foreign usage (Tariff of 18 Jan. 1965):

*Postcards to Canada, "rayons limitrophes," and Common Market countries;

*Postcards, and visiting and greeting cards, "of 5 words";

Printed matter, to 50 gm.

Usage (Tariff of 13 Jan. 1969):

Newspapers, from 400 to 500 gm, unsorted bulk rate (domestic);

Complementary value.

0,30 values

1124	1454	Mont Blanc tunnel	17-19 July '65-16 Apr. '66	19.55
1131	1455	EUROPA	25-27 Sep. '65-23 Sep. '66	23.89
1134	1461	Tercentenary of Réunion	2-4 Oct. '65-18 June '66	17.565
1137	1464	Launching of Satellite A-1	30 Nov.-2 Dec. '65-19 Nov. '66	8.052
1163	1490	EUROPA	24-26 Sep. '66-28 Apr. '67	31.31
1178	1521	EUROPA	29 Apr.-2 May '67-26 Apr. '68	40.60
1209	1556	EUROPA	27-29 April '68-8 March '69	30.29

Usage (Tariff of 18 Jan. 1965):

(see 0,30 Coq de Décaris, in I. D.).

Usage (Tariff of 13 Jan. 1969):

(see 0,30 Arms of Paris, in IV).

0,40 values

1118	1447	Return of Displaced Persons	1-5 April '65-12 Feb. '66	7.25
1121	1450	20th Anniversary of Victory	8-10 May '65-12 Feb. '66	8.285
1123	1452	Croix-de-Guerre	22-24 May '65-12 Feb. '66	7.76
1158	1485	Congr. of Phil. Socs., Niort	28-31 May '66-4 Feb. '67	9.595
1165	1495	Vercingétorix	5-7 Nov. '66-23 Sep. '67	6.55
1166	1496	Clovis	id. id.	6.545
1171	1508	European Broadcasting Union	3-6 March-16 Sept. '67	6.81
1181	1523	Nungesser and Coli	6-8 May '67-17 Feb. '68	7.30
1182	1525	Congr. of Phil. Socs., Tours	13-16 May '67-24 Feb. '68	8.00
1192	1528	Floralies d'Orléans	29-31 July '67-23 Mar. '68	7.55
1196	1534	Lions International	28-30 Oct. '67-12 Oct. '68	10.00
1199	1538	Philippe-Auguste	10-13 Nov. '67-19 Oct. '68	7.45
1200	1537	Hughes Capet	id. id.	7.212
1202	1542	50th Anniv. of Chèques Postaux	6-8 Jan. '68-22 March '69	11.67
1208	1555	Audio-Visual Institute, Royan	13-16 April '68-22 Mar. '69	8.855
1211	1558	Alain René Le Sage	4-6 May '68-22 Mar. '69	14.535
1213	1560	Pierre Larousse	11-13 May '68-22 Mar. '69	17.905
1216	1563	Treaty of Aix-La-Chapelle	29 June-1 July '68-12 Apr. '69	7.665
1220	1567	Congr. of Phil. Socs., Béziers	7-9 Sep. '68-19 Apr. '69	10.62
1221	1569	50th Ann. of Victory in Orient	28-30 Sep. '68-17 May '69	7.30
1223	1571	Olympic Games, Mexico	12-14 Oct. '68-19 Apr. '69	6.285
1224	1572	French Polar Expeditions	19-21 Oct. '68-21 June '69	6.918
1225	1575	"Little White Beds"	26-28 Oct. '68-21 June '69	7.76

1227	1578	Bertrand Du Guesclin	16-18 Nov. '68-5 July '69	6.95
1228	1577	Philippe le Bel	id. id.	6.675

Foreign usage (Tariff of 18 Jan. 1965):

*Postcards;

Letters, to 20 gm, to Indo-China, Morocco, Tunisia, and Guinea;

Airmailed visiting and greeting cards, w/o added message, per 5 gm,
to French Community countries of Africa (from 1 Aug. 1966?).

Usage (Tariff of 13 Jan. 1969):

(see o,40 Ronchamp, in VI. A.).

o,60 values

1120	1449	Welcome and Amiability Camp'n	24-26 Apr. '65-12 Feb. '66	10.65
1122	1451	Intl. Telecommunication Union	17-19 May '65-12 Feb. '66	7.00
1132	1456	EUROPA	25-27 Sep. '65-23 Sep. '66	11.225
1135	1462	Atomic Energy Commission	9-11 Oct. '65-18 June '66	7.80
1138	1465	Satellite A-1 in Space	30-Nov.-2 Dec. '65-19 Nov. '66	8.052
1148	1476	Launching of Satellite D-1	18-21 Feb. '66-14 Jan. '67	9.808
1154	1480	International Chess Festival	2-4-Apr. '66-21 Jan. '67	6.47
1159	1487	Académie des Sciences	4-6 June '66-11 March '67	6.38
1160	1486	Battle of Hastings	4-6 June '66-11 March '67	5.70
1161	1488	International Railroad Cong.	11-13 June '66-11 March '67	6.51
1164	1490	EUROPA	24-26 Sep. '66-28 Apr. '67	8.20
1167	1497	Charlemagne	5-7 Nov. '66-23 Sep. '67	6.232
1170	1500	Tidal-power station on Rance	3-5 Dec. '66-14 Oct. '67	7.61
1176	1520	Winter Olympics, Grenoble	22-24 Apr. '67-14 Dec. '68	24.80
1177	1519	EXPO '67, Montreal	22-24 Apr. '67-20 Jan. '68	8.73
1179	1522	EUROPA	29 Apr.-2 May '67-26 Apr. '68	10.31
1184	1526	Robert Esnault-Pelterie	27-29 May '67-24 Feb. '68	7.325
1193	1529	Intern. Accountancy Congress	2-4 Sep. '67-4 May '68	6.61
1195	1533	Marie Curie	21-23 Oct. '67-12 Oct. '68	7.04
1201	1539	St. Louis (Louis IX)	10-13 Nov. '67-19 Oct. '68	6.50
1210	1557	EUROPA	27-29 Apr. '68-8 Mar. '69	11.165
1212	1559	Chateau de Langeais	4-6-May '68-8 Feb. '69	7.555
1215	1562	Papal Enclave, Valréas	25-27 May '68-8 Feb. '69	7.245
1229	1579	Joan of Arc	16-18 Nov. '68-5 July '69	6.817

Usage (Tariff of 18 Jan. 1965):

(see o,60 Airx-les-Bains, in VI. A.).

Usage (Tariff of 13 Jan. 1969):

(see o,60 Vire, in VI. B.).

1,00 values ("Art" stamps)

1113	1426	Toulouse-Lautrec	12-15 March '65-13 Nov. '65	6.918
1114	1427	Stained glass, Sens Cathedral	5-8 June '65-5 Mar. '66	7.183
1115	1457	Book of Hours of Duc de Berry	25-27 Sep. '65-10 Sep. '66	7.647
1116	1458	Apocalypse Tapestry	30 Oct.-2 Nov. '65-17 Sep. '66	7.275
1117	1459	Dufy, "Red Violin"	6-8 Nov. '65-17 Sep. '66	7.275
1149	1478	Horses, from bronze vessel Vix	26-28 Mar. '66-21 Jan. '67	6.953
1150	1479	Georges de La Tour	25-27 June '66-20 May '67	8.02
1151	1492	Stained glass, Sainte-Chapelle	22-24 Oct. '66-16 Sep. '67	7.665
1152	1493	Tapestry by Lucat	19-21 Nov. '66-7 Oct. '67	7.537
1153	1494	Honoré Daumier	10-12 Dec. '66-28 Oct. '67	7.925
1172	1517	Henri Rousseau	15-17 Apr. '67-23 Mar. '68	8.143
1173	1518	Francis I, by Clouet	1-3 July '67-6 July '68	8.093

1174	1530	Bather, by Ingres	9-11 Sept. '67-21 Sept. '68	8.20
1175	1531	Stained gl., Ste.-Madeleine, Troyes	7-9 Oct. '67-16 Nov. '68	7.45
1204	1554	Lascaux Cave paintings	13-16 Apr. '68-21 June '69	7.748
1205	1568	Paul Gauguin	21-23 Sep. '68-27 Sep. '69	8.567
1206	1573	The Dance, by Bourdelle	26-28 Oct. '68-11 Oct. '69	8.27
1207	1574	Auguste Renoir	9-12 Nov. '68-25 Oct. '69	7.95

Usage (Tariff of 18 Jan. 1965 and rate change of 1 Aug. 1966):
(see 1,00 Carnac, in VI. A.).

Usage (Tariff of 13 Jan. 1969):

Airmailed postcards, to 5 gm, to Far East and Australasia;

*Supplementary value.

1,60 value

1168	1498	Cent. of Pneumatic-tube system	11-14 Nov. '66-26 June '70	6.32
------	------	--------------------------------	----------------------------	------

Usage (Tariff of 18 Jan. 1965):

#Pneumatic-tube mail, to 7 gm (at Paris) (through life of issue);
Airmail letters, from 5 to 10 gm, to Viet-Nam, India, Persian Gulf
countries, and certain non-French Community areas of Africa;
Airmailed small parcels, to 25 gm, to USA, Canada, and Mexico.

Usage (Tariff of 13 Jan. 1969):

Airmail letters, from 5 to 10 gm, to Western Hemisphere (except
Canada and French Depts.), India, Ceylon, Afghanistan, Persian
Gulf countries, Pakistan, South Yemen, and certain non-French
Community areas of Africa.

Usage (Tariff of 12 Jan. 1970):

Small parcels, to 200 gm (foreign);

Printed matter and samples, from 300 to 350 gm (foreign).

Retired from sale 26 June 1970.

References (for VII, VII, and Interlude II)

La Bourse du Timbre: "1977 Cours et Valeurs des Timbres de France."

Broustine, P., Françon, R., Mignon, B., and Storch, J., (1977), "Les Roulettes—
Timbres pour appareils distributeurs," Annonay, 237 p.

Cérès: "Catalogue Cérès 1978."

Didot-Bottin: "Bottin Administratif et Documentaire," Paris, Société Didot-
Bottin: for years 1965-68.

Hanson, E. S., (1974), "Recent coil stamps of France, with a supplementary
listing," FCP, No. 156.

Joany, Dr. R., (1974), "Les surtaxes de la poste aérienne," Le Monde des Phi-
latélistes Etude No. 166.

Lizeray, Pierre de, (1969), "70c. St.-Germain-en-Laye—Molette: Etat II," Le
Monda des Philatélistes, No. 216.

Marion, Pierre, (1972), "La Roulette du 40c Ronchamp," Le Monde des Phi-
latélistes, Nos. 240-241.

P.T.T., Service Philatélique: "Notices" on new issues; "Communiqués" on
stamps retired from sale, etc.; special supplements and leaflets, on tariffs.

Rouquès, Dr. L., (1971), "La Roulette du 0,40 Ronchamp," Le Monde des Phi-
latélistes, No. 235.

Sager, W. A., (1967), "The French Art Stamps," American Philatelist, v. 80,
no. 5.

SO.CO.CO.DA.MI.: Supplements to de Vinck and Charvet: "L'Impression des
timbres français par les rotatives."

Thiaude: "Catalogue Thiaude 1974."

A CHRONOLOGY OF FRENCH CAMPAIGNS AND EXPEDITIONS WITH THEIR POSTAL MARKINGS

By William M. Waugh and
Stanley J. Luft

Associate Member, Académie d' Etudes Postales

Correction to Part I, FCP #183, p. 23, line 7, insert the words "while some" at beginning of the line.

II. The Period 1848-1869

- 1848 Revolution in Paris, February 22-24, overthrows King Louis Philippe. Republic proclaimed February 24.
- 1848 Abortive unofficial filibustering expeditions into Savoy, April 3-4; Baden, April 23-27; and Belgium.
- 1848 After a period of riots and unrest, Paris workers' insurrection put down with bloodshed, June 23-26. Also an uprising at Lyon.

Numerous administrative cachets of various sizes, commonly double circles, mostly in black or blue; used at many prisons and other places of detention in Paris, the Seine Dept., Versailles, Clermont (Oise), Belle-Isle (Morbihan), and in Algeria; generally used 1848-51. Such cachets are scarce to very rare.



- 1849 Attack on Nossi-Bé by Malgaches and pirates repulsed.
- 1849 Franco-British action against natives of Bissagos Islands, Guinea.
- 1849 Algeria:—revolt in southeast and French capture Oasis of Zaatcha.

During this and most subsequent actions in Algeria, military mail was handled by the French civil postal system of Algeria and is generally indistinguishable from ordinary civilian mail. Some items, bearing ordinary French Type 15 Algerian cachets, and small or large numerals killers of Algeria, can be recognized by occasional administrative

markings, endorsements of the sender or his commanding officer, or contents.

1849 Uprising in Lyon, June, and abortive rising in Paris, June 13.

1849 Rome:—French troops join intervention against Roman Republic. Land at Civita Vecchia, April 24. After initial repulse they capture Rome, July 1. French troops stay on but most of them are evacuated in 1866.

This is the first campaign that followed the introduction, in France, of postage stamps. Covers without stamps show only campaign dated cachets, usually accompanied by dues markings; those with postage stamps (known only from 1850-on) have the stamp cancelled with special killers associated with these cachets. Two expedition cachets were used: CORPS EXPÉDITE D'ITALIE, Qer GENERAL (Fig. A below) and BRIGADE FRANÇAISE, ITALIE (Fig. B); the grill killer of Metropolitan France was used. For the ensuing (1852-67) occupation of the Papal States: Fig. B was retained, and also used were CORPS EXPÉDITIONNAIRE D'ITALIE, 1e (and e2) DIVISION (Fig. C), and (particularly in later years) CORPS EXP. D'ITALIE, 2e DIVISION (Fig. D); all accompanied by the Metropolitan grill on the stamps. All markings are in black. A rare CORPS EXPÉDITE D'ITALIE, TOULON-S-MER dated cachet (Fig. E) also exists. Administrative cachets exist and are rare.

The grill of Civita Vecchia (Fig. F) was used to cancel prepaid letters deposited by military personnel in Papal State post offices; this usage is rare and should not be confused with more ordinary civilian mail that escaped cancellation in France and was cancelled in the Papal States on arrival.

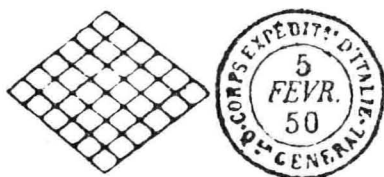


Fig. A

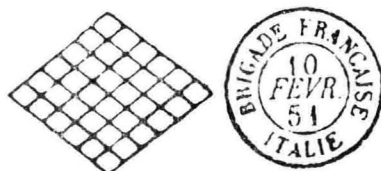


Fig. B

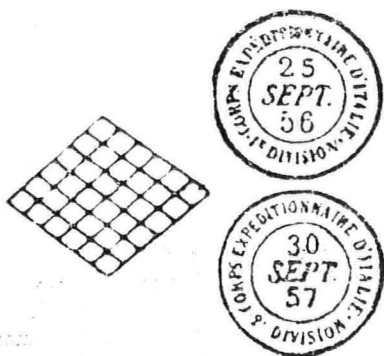


Fig. C

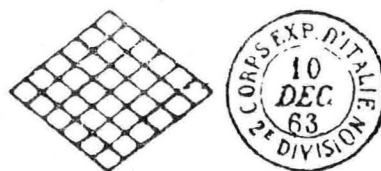
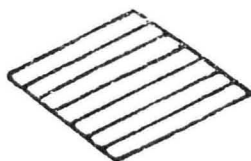


Fig. D



Fig. E

**Fig. F**

- 1850-54 Algeria:—penetration of desert, El Aguat stormed December 4, 1852; capture of Tuggurt, 1854..
- 1851 Algeria:—ineffective campaign in Little Kabylia.
- 1851 Anglo-French naval blockade of Haiti.
- 1851 French naval bombardment of Salé, Morocco, in ship-looting reprisal.
- 1851 New Caledonia:—crew of French warship attacked by natives.
- 1851 Paris:—Massacre of the Boulevards, December 2. President Louis Napoleon suppresses opponents. Also minor disturbances in various French provinces.
- 1854-59 Senegal area:—expansionist policy under General Faidherbe. Following Moorish raids, fighting against Trarzas Moors 1854-58, Braknes Moors 1854-55, Duaish 1854, Marabout rising 1855, at Medine 1857, in Senegambia 1857-58. Treaties with Trarzas and Braknes 1858, but their raids continue.
- 1854-56 Crimean War:—French, British, Turks, and Sardinians fight Russia, war having started between Russians and Turks in 1853. France and England declare war March 27, 1854. Russia defeated. Peace treaty March 28, 1856. Franco-British action in the Baltic Sea July-September 1854, as well as in the Crimea. Allied bases in Turkey. French occupation of Piraeus, Greece, to keep Greeks neutral.

The Armée d'Orient operating in the Crimea used a multitude of Type-15 cachets and lozenge killers. Much of the mail continued to be sent unpaid, and such stampless covers of course lack killers. The cachets show ARMÉE D'ORIENT at the top, and at the bottom: QUARTr. Gal. (AOGQ in the killer), Gde. iMPLe. (AOGI), (Fig. A below), Bau. Cal (AOBC), Bau. SEDre (AOBS), 1er CORPS (AO1C) through 3e CORPS (AO3C), and the following lesser bureaus: Bau A through R (no bureau I nor Q) (AOA through AOR) (Fig. B). In addition the central bureau for sorting mail to and from France at Kamiesch used a special, very rare, dotted outer ring (Type-22) cachet: KAMIESCH, ARMÉE D'ORIENT (with KHAO killer) (Fig. C), and a more common: KAMIESCH, CRIMÉE (with AOM) (Fig. D), mainly on non-military mail. A transit mark, boxed MER NOIRE (Fig. E), was used on mail passing Constantinople from the Black Sea, July 1855-June 1856, with Constantinople postmark on backs of the covers.

Markings of the Baltic action are rare to very rare. They include CORPS EXPre DE LA BALTIQUE* (CEB killer) (Fig. F) and a boxed ESCADRE DE LA BALTIQUE (Fig. G). Administrative cachets exist. Many of the troops bound for Crimea were assembled near Aix and Toulon where special markings of the Camp du Midi (Fig. H) and Camp de Porquerolles (Fig. I) were available. These are very rare.

All of above markings are in black.



Fig. A



Fig. B



Fig. C



Fig. D

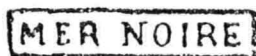


Fig. E

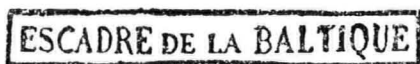


Fig. G



Fig. F



Fig. H



Fig. I

For the occupation of Piraeus, Greece, the very rare Type-15 cachet, BRIGADE FRANCAISE*GRÈCE* (BFG killer) in black was used.



- 1856 Gambia:—French forces from Gorée help British fight Gambia natives.
 1856 Indo China:—bombardment and landing at Tourane (Danang), Annam.
 1857 Algeria:—subjugation of Kabylia.
 1857-58 War with China by French and British.

1858-62 Indo China:—War in Cochinchina, etc. Spanish aid French in initial action. Saigon captured, February 1859. France takes three provinces: Bien-Hoa, Gia-Dinh and Dinh-Tuong. Peace June 5, 1862.

Markings generally postdate those of the 1860 China Campaign (see 1862-67, below). The Type-15 cachet, CORPS EXP. CHINE, Bau A (CECA killer) of the China Campaign, struck in black, was used in Saigon (rare) Feb. 1861-June 1862.

1850's etc. Moroccan Border:—raids and punitive expeditions back and forth.

A very rare Type-15 cachet, CORPS EXP. MAROC, ALGÉRIE, with C. M. A. killer in lozenge, exists in black dating from 1859.



1859 Italian War:—France and Sardinia defeat Austria at Magenta and Solferino. Sardinia annexes Lombardy. Sardinia cedes Nice and Savoy to France in 1860. France declares war May 3, 1859. Peace of Villafranca July 11. French troops remain until spring of 1860.

The French army was called at first Armée des Alpes, and its markings, which are scarce to rare, are known only from May 1859. Cachets bearing the new name, Armée d'Italie, were used from late May, sometimes early June, and are somewhat more common. All are Type-15; killers are the same for both armies. Black is the normal color; red markings are rare to as yet unknown. A provisional, boxed 2-line script Correspondance/des Armées (Fig. A below), struck in black or red, was used prior to arrival of Armée des Alpes cachets.

The cachets first bore ARMÉE DES ALPES at the top; the subsequent ones ARMÉE D'ITALIE. Examples of the first (May 1859) period include: Qr G1 Ier CORPS through 5e (CORPS (AA1C through AA5C killers) (Fig. B) Gd QUARTIER Gal (AAQG), Bau CENTRAL (AABCal), and Bau A through Bau T (Fig. C) (no bureau J nor Q) (AAA through AAT). Also the rare, whether black or red, BUREAU SPÉCIAL DE L'EMPEREUR (BSE killer) (Fig. D) used in May and June when Napoleon III was in nominal command.

ARMÉE D'ITALIE markings cover an even wider range, indicative of the enlargement and evolution of the army with time. Ordinary bureaus range from Bau A through Bau Z (no bureau Q nor W) (AAA

through AAZ killers) (Fig. E). Those of the Gd Quartier Gal and the five corps headquarters (Fig. F) are otherwise the same as those for the Armée des Alpes. Sedentary bureaux were established in five Italian cities, names of which are shown at the bottom of the cachet:—Alexandrie (ALEX in killer), Brescia (ABR), Cremona (ACRE), Milan (AMIL) (Fig. G), Livorno (ALIV); these are very scarce to rare on covers bearing postage stamps and scarce on unpaid mail. The Imperial Guard had its own markings: Type-15 cachets with GARDE IMPL at top, and Qer Gal (GIQG killer), 1 CAVALERIE (G11C) (Fig. H), 1er Don (G.I.Ie.Don) (Fig. I), and 2e Don (G.I.2Don); these are very scarce on covers bearing postage stamps, and scarcer still if in red. Armée d'Italie markings used 1859-60.

The fascinating study of Sardinian markings on French stamps and of French markings on Sardinian stamps, used in Nice and Savoy, is beyond the scope of this work.

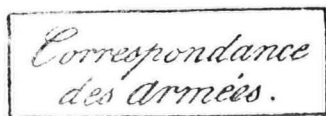


Fig. A



Fig. B



Fig. C.



Fig. D

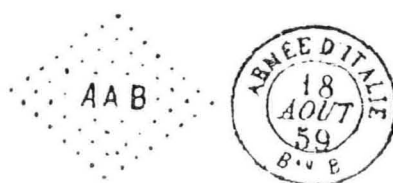


Fig. E



Fig. F

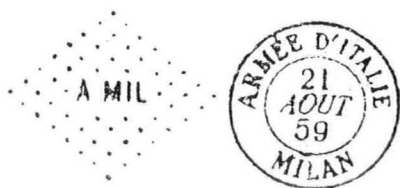


Fig. G

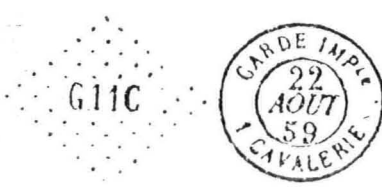


Fig. H



Fig. I

1860 Renewed war with China:—French and British capture Peking. French land August 1, 1860, enter Peking Oct. 6. Chinese sign a "Convention" October 31, 1860. Evacuation of French troops ends in November 1861, but naval units remain in the Chinese area.

Black, Type-15 cachets, reading CORPS EXP. CHINE at top, and accompanying lozenge killers. They are scarce to very rare. They include:—Bau CENTRAL (with CECB.C^L killer) (Fig. A below), and Bau A through D (with CECA through CECD killers) (Fig. B). Used mostly 1860-61, but the Bureau Central, which opened at first at Hong Kong and soon moved to Shanghai, operated to March 1862. Bureau A operated at Saigon primarily for French and Spanish troops still stationed in Cochinchina (since 1858), open only Feb. 1861-June 1862. Bureau B was at Chefou first (1860) then at Tientsin, 1860-61, Bureau C at Canton 1860-61. The very rare Bureau D was at Singapore, Feb. 1861-March 1862. There are also rare administrative cachets.



Fig. A



Fig. B

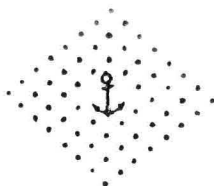
1860 Syrian Expedition to Lebanon to protect Christians, who were being massacred. Landing at Beirut August 1860, pacification, occupation until June 1861.

The Type-15 cachet, CORPS EXP. DE SYRIE, Bau A (CESA killer) is very scarce; that of Bau B (CESB) is very rare. Markings are in black. Used 1860-61.



1860-62, etc. China:—in incidents separate from the war with China, French and British sailors fight Taiping rebels in the Shanghai area, also in Ningpo 1862. French remain and aid in the suppression of Taiping rebellion, which ends in 1865.

The "Bureau Central" at Shanghai for the China War was closed in March 1862. Later a COR. D. ARMÉES/INDO-CHINE mark was used on board French packets calling at Shanghai, Feb. 1863-1866, on mail collected from military campaigners all over eastern Asia; if stamps were affixed they were cancelled with the anchor. From 1866 to Oct. 1871 this mark was used at the Shanghai P.O., and stamps cancelled by 5104 large-numeral lozenge. A series of CORR. D. ARMÉES/SHANG-HAI date postmarks began in April 1873 and continued in use to 1922; there was a small French garrison in the French Concession there. But only in the 1863-66 period, again during the Boxer Rebellion 1900-3, and in WW I, were these marks used on military-campaign mail and are very rare used thus (probably used also on civilian mail).



1860 Algeria:—minor expedition in Kabylia.

A Type-15 cachet, KABYLIE COLONNE EXPEDre*, and KCE killer, has been depicted by some writers—all of whom apparently copied it in some form or other from Maury's reconstruction of a fuzzy marking—and its existence remains in doubt. We show it here simply "for the record." An alleged KCE killer on off-cover stamp was exhibited at ARPHILA in 1975.



1862-67 Mexican Expedition:—In early 1862, French troops join Spanish and English in occupation of Vera Cruz in a claims dispute. The other nations withdraw, but French fight Mexicans and bring in Maximilian as Mexican Emperor. French troops fight in support of him, but leave in March 1867. Maximilian is captured and executed.

Various markings exist for this campaign. Type-15 cachets, with CORPS EXP. MEXIQUE at top, and accompanying killers, are in black.

They include Bau A through M (no bureau I) (CEMA through CEMM) (Fig. A below). The CEMA killer exists with normal and thin (Fig. B) letters. The M of the CEMG killer deteriorated rapidly, resulting in a CE G (Fig. C); the K in the cachet of Bau K is, from 1865-on, an inverted N (Fig. D). The scarcest marking is the rare Type-22 cachet, CORPS EXPÉD., VERA-CRUZ (Fig. E), used by the principal military-civilian bureau at Vera Cruz. Rare administrative cachets exist.

Maritime transit, from Vera Cruz, was via French or British packets (Figs. F and G); postage stamps, if used, were generally struck with the anchor killer. A rare octagonal CORRESP. D'ARMÉES, VERA-CRUZ dated cachet (Fig. H) was also used 1862-64, as well as circular-dated cachets of the ships "Mexique/Floride," and "Mexique/Louisiane"; the ship covers are "military" only in the proper context of originating with the expeditionary corps personnel (very rare).



Fig. A



Fig. B



Fig. C



Fig. D



Fig. E



Fig. F



Fig. G



Fig. H

1862-67 Cochin China:—extensive guerilla resistance to French.

The China Campaign mark of Bureau A was used only to June 1862, no PO nor postmark July-Dec. 1862 at Saigon. In January 1863 the ETABLISSEMENTS FRANÇAIS DE LA COCHINE: SAIGON: dated cachet (Fig. A below, reduced ca. 10%) and CCH lozenge, struck

in black, were introduced; rare with General Issues of the Colonies stamps and very rare (accidental) with French stamps. Used to 1864. At end of December 1862 this cachet was supplemented by a small octagonal-dated cachet CORR. D'ARMÉES*SAIGON* and CCH in lozenge killer (Fig. B). (The rare circular-dated cachet COR. D. ARMÉES / INDO-CHINE (Fig. C) was not used in Indochina, but on French packets calling at Shanghai on mail from military campaigners all over eastern Asia, Feb. 1863-1866, thereafter at Shanghai P.O.; stamps cancelled on ships by the anchor 1863-66, at Shanghai PO by the numeral lozenge 5104.)

From Dec. 1863 through 1868, additional octagonal dated cachets of the Corr. d'Armées type appeared for various towns under French control:—(Figs. D and E are examples).



Fig. A



Fig. B



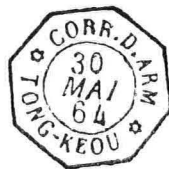
Fig. C



Fig. D.



Fig. E



CORR. D. ARMÉES*BIEN-HOA* (CCN2 killer) (Fig. D), MY-THO (CCN3), BARIA (CCN4), GOCONG (CCN5), TAY-NINH (CCN6), TONG-KEOU (CCN7), (Fig. E), and TRANG-BANG (CCN8); some were struck in blue as well as or instead of black. Postage stamps used after 1 June 1863 were obligatorily supposed to be those of the Colonies General Issues, though French stamps and mixed franking were tolerated in the earlier months. All markings are very scarce to very rare. A detailed study has been presented by Desrousseaux (1972).

1862-66, etc. Senegal area:—intermittent fighting with Puels (Fulani) of Toro, etc., against Wolofs of Kayor ca. 1863, Marabouts 1866.

Octagonal-dated cachets were in use at St.-Louis de Sénégal: CORR. D'ARMÉES*ST-LOUIS* (SNG killer), from 1864, and at headquarters of the naval division at Gorée: CORR. D'ARMÉES*GORÉE* (GOR killer), from 1863. Early military usage of these markings is rare or very scarce.



Ca. 1863-64 Algeria:—more fighting in Kabylia.

1864 French participation in punitive naval bombardment of Shimonoseki, Japan, with British, Americans and Dutch.

1864 Algeria:—insurrection of Walid-sidi-Sheikh in So. Oran.

1864-68 Cambodia:—French help native ruler put down revolts and then pacification.

1866 French punitive expedition to Korea.

1867 Second Roman Expedition:—French troops supporting the Pope land October 28, defeat liberation forces led by Garibaldi at Mentana, November 3. French troops remain until August 25, 1870.

The new expedition to Rome utilized Type-15 cachets and corresponding lozenge killers. They are: CORPS EXPÉDre D'ITALIE, ROME (CER killer) (Fig. A below), somewhat scarcer in black than in red; the very rare CORPS EXPÉDre 1 ROME 1 (CER1), in black; and CORPS EXPÉDre 2 ROME 2 (CER2) (Figs. B and C), somewhat scarcer in black than in red. Used from 1867 until summer 1870, when the troops were removed for the war against Prussia.



Fig. A



Fig. B



Fig. C

1867-68 Cochin China:—new wave of guerilla resistance after June 1867 seizure of the rest of Cochin China.

Continuation of the octagonal cachets discussed above, under 1862-67 Cochin-China.

References On Military Postal Markings

- G. Bertrand (1948), "Mémorial Philatélique," v. VI, "La France," Louis Schneider, Bischwiller.
- G. Delwaulle (1977), "Correspondances des Armées sous le Second Empire," Feuilles Marcophiles, No. 210, pp. 15-16 (on Mexico, 1862-67).
- J. Desrousseaux (1972), "Les Postes Françaises en Extrême-Orient," Brochures II and III. Paris.
- P. Foster (1978), "L'Expédition de Rome 24 Avril 1849-3 Juillet 1849," Feuilles Marcophiles, No. 212, pp. 16-17.
- L. François (1929), "Les Cachets et Oblitérations de la Poste Française aux Armées (1849-1870)," Yvert & Cie., Amiens (reprinted 1978).
- J. Legendre (1964), "L'Insurrection Parisienne de Juin 1848 et ses Marques," Feuilles Marcophiles, No. 162.
- A. Maury et al. (1929), "Catalogue des Estampilles et Oblitérations Postales de France et des Colonies Françaises," Yvert & Cie, Amiens (reprinted 1976 by Argemenschaft Frankreich, and 1980 by Postilion Publs., Southfield, Mich.).
- J. Pothion (1978), "France Oblitérations 1849-1876," La Poste aux Lettres, Paris.
- J. Schatzkes (1975), "Correspondences d'armées, cachets sur lettres des colonies générales," Documents Philatéliques, No. 65, pp. 115-132.
- R. Salles (1962, 1966); "La Poste Maritime Française," Tome II: "Les Paquebots de la Méditerranée"; Tome V: "Les Paquebots de l'Extrême Orient." Paris, 1962, 1966.
- R. G. Stone (1977), "A Key to the Lozenge Obliterators of French Colonies, 1860-1892." Suppl. to Fr. & Cols. Phil. No. 167.

Historical References 1815-69 (—there is also extensive historical information in some of the postal-marking references above)

- "Encyclopaedia Britannica," 11th Edition, New York, 1910.
- W. E. Marshall: "A History of France," New York, 1925.
- John M. Merriman, (Ed.): "1830 in France," New York, 1975.
- William L. Langer: "Political and Social Upheaval, 1832-1852," New York, 1969.
- Jean Sigman: "1848," New York, 1973.
- Georges Brunel: "Expansion Coloniale Française," L'Echo de la Timbrologie, 1931-32.
- R. Ernest and Trevor N. Dupuy: "Encyclopedia of Military History," New York, 1970.
- John Flint, (Ed.): "The Cambridge History of Africa," Cambridge, 1976.
- Sydney N. Fisher, "The Middle East," 2nd edition, New York, 1968.
- Maurice Jamet: "150 Ans d'Histoire Postale des Anciennes Colonies Françaises, 1720-1860," Paris, 1980.
- John D. Hargreaves: "French West Africa," Englewood Cliffs, N. J., 1967.
- Alfred G. Gerteiny: "Mauretania," New York, 1967.
- Joan Haslip, "The Crown of Mexico," New York, 1971.
- Henry McAleavy: "Black Flags in Vietnam," New York, 1968.

CURRENT JOURNAL ARTICLES

Le Monde des Philatelistes (CC, APRL)

- #337, Dec. 1980: "Louis Vivin et l'Alsace"; Munck: "La croix sans toutes ses formes"; Mazabrey: "Faux de Spérati—les diverses possibilités de falsification"; Janton: "Les usages fiscaux des timbres-poste d'Obock et de Djibouti"; Melot: "Le choix et le nombre (no. 1s"; Fromaigeat: "Guerres et services postaux"; conts. of Frybourg, Trasaert, DeLizeray, Perrin, Tristant, La France en Thématique.

Les Feuilles Marcophiles Information (CC)

- #28, Nov. 1980: Schroeder: "Le grand cachet à date fleuron après le 1er Janv. 1849"; Lelorain: "Le service postale (in 1858)"; Lochin: "Taxes ismples utilisée à Narvik Bureau Postale Militaire 205 Juin 1940" (dues).

American Philatelist (CC, APRL, SI, CSM)

- #960, Jan. 1981: Stone: "The Comorro Islands—Postal History Sketch."

The Philatelist (Lowe) (CC, APRL)

Dec. 1980: Ruffle, cont.

Feb. 1981: Ruffle, cont.

Documents Philatéliques (CC)

- #87, 1st Trim 1981: Dubus: "La poste dans le Rhone et la Loire"; Dubus: "Cachet de Karikal"; Prugnon: "Premier émission lettres pour étranger"; Bernard: "20c Empire lauré Type I"; Maradon: "Timbres allemande en France en 1870-71"; de la Méttrie: "Homage à M. Germain"; Germain: "25c Cérés"; DeFontaines: "Reinstallation francaises en Alsace 1914-18"; Barbey: "Surtax de la Poste Restante."

Indo-China Philatelist (CC, APRL)

- #45, Jan. 1981: Bentley: "U. S. Naval ports of call in Indochina"; Stone: "On proofs"; Klewitz: "Tripartite Viet Nam (3)"; Wade: "Maximum cards"; Wade: "Notes on King Marie of Sedang."

Bulletin de la Société COLFRA (CC)

- #11, 3rd Trim. 1980: Janton: "Les timbres fiscaux des colonies francaises —note introductive"; Malon: "Guyane—Port Inini" (end); Malon: "Gu'yane—Matoury"; Drye: "30Fr Aérogramme NCE"; Disler: "Polynesia—Mopelia office."

Postscript (CC, APRL)

- #144, Oct/Dec. 1980: Cohn: "The philanthropic mail" smuggler—Paris 1870 (Lucien Morel)"; Coles and Teall: "Illyria—the French occupation 1805-14 and its aftermath."

Collectors Club Philatelist (CC, APRL, SI)

Jan. 1981: Ludington: "Monaco" (cont.)

March 1981: Ludington, cont.

France and Colonies Philatelic Society Newsletter (CC)

- #37, Sept. 1980: Cohn: "When did the 'Merlin de Douai' fly?"; Rauch: French ambulant and P. O. at Basle"; Happé: "Some details of the Trésor et Postes postmarks of 1914-1919"; Barker: "London '80."

Bulletin Trimestriel de l'Amicale Philatélique l'Ancre/Nantes (CC)

- #20, Oct. 1980: Maupas: "Un peu d'histoire—les ballons montés"; Houlteau: "De la documentation" (P. H. in exhibit cats.); Sauvanet: "Les Sabines et l'Affranchissement"; Creneguy: "Cachet OR et controverse."

Postillon (CC)

- #150, Sept. 1980: Delwaule: "Drei Raitenpunktstempel der Pariser Stadtpostämter" (end); Hitzske: "Die deutsch/französische Dopelfreimachung von 1871-72"; Boblique: "Markenheftchen und Heftchenmarken" (begin); Perron: "Kriegsmarken-Ausgaben Dunkirchen-Couderkerque 1 July-9 Aug. 1940"; "Fälschung der Marianne de Bequet"; Schick: "La Croix Frères Wasserzeichen"; Bernard: "Soudan Français."

Chronicle of the U. S. Classic Postal Issues (CC, APRL, SI)

- #108, Nov. 1980: Rose: "The Type I 15c 1869 on cover; census and analysis."

Bulletin de la Société des Amis du Musée de la Poste (CC)

- #64, 2nd Trim. 1980: Monteaux: "Feuilles pour roulettes plat de France"; Boussac: "Boûles et ballons"; DeLizeray: "Ceres IIeme Republique—Rabot et tet beche"; Lebesle: "En 1856 certaines telegraphes étaient pour météorologiste"; Mathieu: "Exposition"; Rykner: "Le régime des franchises entre France et Monaco"; Monteaux: "France erreurs de dates"—"Quelques autres anomalies de coins datés"; Boussac: "Cartes de visite personnalisées"; DeLizeray: "A propos du Sage Type II"; de Fontaines: "Wesel—Bureau Français du 1er Juin 1808 à 15 Jan. 1814."

Philatéliste Erinnophile (CC)

- 1980, #6, Nov.-Dec.: "Île Barbe"; "Principauté de l'Olivette."

Messages des P. T. T. (CC, APRL)

- #299, Dec. 1980: "La vente des timbres poste" (on giving receipts for stamp sales); "Un vie de sac."

NEW BOOKS, PAMPHLETS, AND CATALOGS

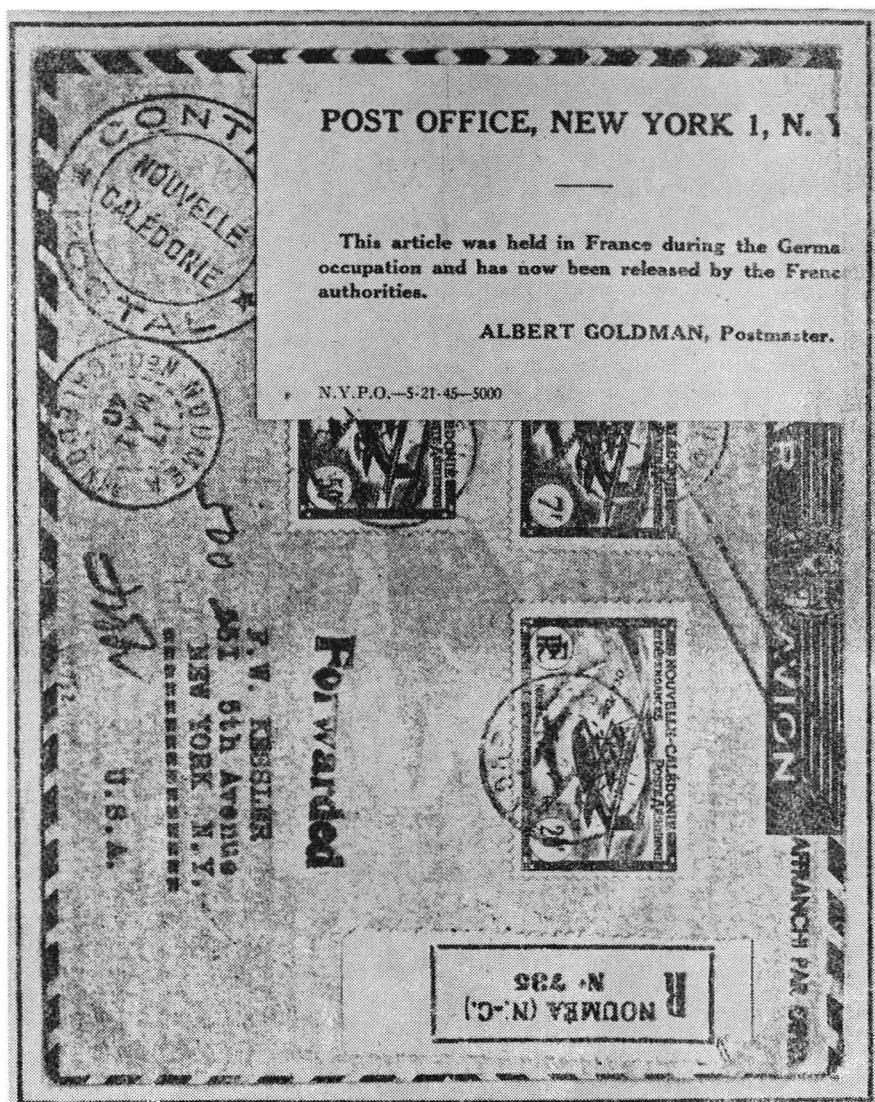
- "Catalogue France Spécialisé à Postes de 1900." Ed. 1981. 120pp. 15Fr+5Fr post. Georges Monteaux. 6 Square de l'Opéra, F75009-Paris (the 1981 edition of Monteaux' annual catalog of 20th France specialized)
- "A Bibliography of Philatelic Literature on the French Colonies, Protectorates, and Overseas Territories.—Vol. I." Compiled by Robert G. Stone. 1981. 110 pp. \$5.00 post paid. American Philatelic Research Library, Box 338, State College, Pa 16801. (Reprint with corrections of his serial in PLR 1977-80; the serial will continue in PLR, with eventual reprint of the rest as Vol. II. Colonies covered in Vol. I are General, Guadeloupe, Martinique, Guiana/Inini, St. Pierre, Tahiti/French Oceania, New Caledonia, Wallis and Futuna, Indochina, India, Comorro Islands.)
- "The Atlantic Mails." By J. C. Arnell. 1980. 412 pp. \$40 (Canadian). National Postal Museum, Ottawa. 180 Wellington St., K1A 1C6 (checks to receiver General for Canada) (in French and English, tabulates all the sailings of packets between America and G. B. before UPU)
- "Le Guide du Collectionneur Thématique." By Emile Bayle. 1980. 140pp. 26.75 Fr + 4.30 post. From Groupement d'Intérêts Philatéliques, 7 rue Saint-Lazare, F75009-Paris. (authoritative guide for novices and advanced thematic collecting)
- "Les Oblitérations Mécaniques à Rechercher ou à Conserver." 32pp., 1980. Le Club le Meilleur, PP 21-77350, Le Mée-sur-Seine. 32.80Fr postpd. (surveys the duplex marks from Daguin, Chambon, Krag, etc. machines, and their periods of use)

- "Michel Europa 1981—West. 1,870pp. 43DM. illustr. (covers countries of western Europe, much referred to for its good documentation and market prices)
- "Les Oblitérations Mécaniques Bloc Dateur Seul." 14pp. 17.20Fr postpd. Le Club le Meilleur (see above). (surveys types of machines that carry only the date block)
- "The Masterworks of France." By J. A. Gelwas. 1980. 180pp. \$9 postpd. Fine Arts Philatelists. From J. Sonderegger, Box 1606, Midland, Mich 48640
- "Catalogue des Oblitérations sur Timbres Maréchal Petain 1941-44, Part I." 64 pp. 1980, illustr. 33.80Fr p.pd. Le Club le Meilleur, BP 21, F77350-Le-Mée-sur-Seine (gives dates of issue and withdrawal, various cancels, POs, prices for special postmarks)
- "Catalogue des Oblitérations de les Services de Gares Paris—Province." 32pp. 1980. 28.80Fr P.pd. Le Club le Meilleur (see above) (continuation of the Cahiers Obliterations Manuels issued earlier in 1980)
- "Cahier de Guerre 1939-1945—No. 15." 30pp. 1980. 18.80Fr p.pd. Le Club le Meilleur (see above) (Addenda to three previous catalogues, covering censor marks, internment camps, etc.)

FOR THE RECORD

(Continued from FCP #182, p. 136)

- ◆ 387) The "peculiar" label described in FtR #377, turns out to be Belgian, not French. Member Theo Van Dam ("Postal Covers") informs us that it was a provisional issued at Louvain in the fall of 1914, which lasted only three days before the Germans suppressed it. It is listed in the Belgian National Catalogue of 1975 as #750, priced Bfr 25,000! Theo sold one on cover recently.
- ◆ 388) Jacques Desrousseaux explains for us the item described in FtR #383. The French Expeditionary Force of Madagascar, was dissolved in 1890, but reconstituted in 1895. It was then that the military franchise entires were printed and supplied to the post-orderlies of the units sailing from Marseille in 1895; included were some relieving forces being sent to Indo-China. Some of the Madagascar entires were apparently diverted to Indo-China at that time. He has seen some of the letter-cards and postal cards used from Tourane (Annam) in 1895-96, overprinted ANNAM-TONKIN, also one with only a manuscript Annam-Tonkin. He knows of a cover without any overprint sent from Saravane (Laos) in Feb. 1896, bearing the postmark "Corresp. D'Armées K.IAI" of Kam-Thong-Iai, Laos, Feb. 1896.
- ◆ 389) Member Robert I. Johnson sent us the accompanying illustration of an interesting cover in his collection of wartime suspended and delayed mails. It was posted at Noumea, New Caledonia, 17 May 1940, prepaid in stamps to go to U. S. (New York) by air via the Middle East and Europe. By the time it reached Paris, France was under German occupation. The cover was held concealed by French postoffice officials until March 1945 when the existence of a large quantity of sequestered mail was revealed. Whether this letter was then sent direct to U. S. or via London is not clear—depends on whose mail bag they put it in. Letter reached New York 17 May 1945. 5000 labels were printed on 21 May by the NY PO to affix to the delayed mail from France. One of the labels was affixed to this cover for delivery on 29 May.



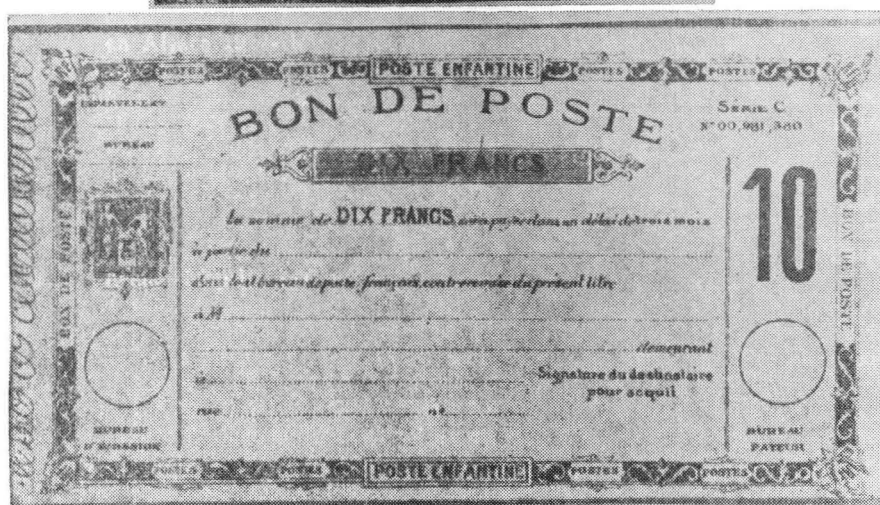
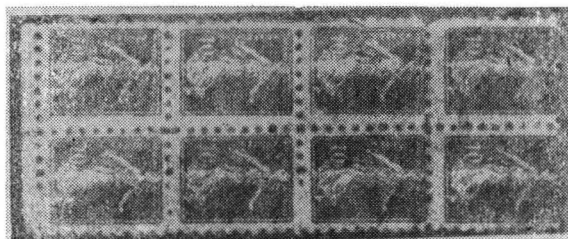
- ◆ 390) A remarkable study of the 1922-24 issues of Monaco by Morris Ludington started in serial form in the Collectors Club Phil. for Nov. 1980, and continuing in following issues. It reveals a very unusual method of production. They were in recess, not printed by the French Govt. printery, but by private firms. The study of the flaws indicates that from a recess master die a roller die with 5 impressions on it was transferred. Strips of 5 on a flat die were transferred from this roller and copies of this made to compose a block of 25 which was electrotyped for the printing plate. Don't ask us how they print recess from an electro.
- ◆ 391) The 3Fr of the last issue of Martinique is seldom seen on covers in late 1948 and early 1949, as the stock had dwindled down for lack of any

replacement of that value while they were waiting for the French 3Fr Gandon to be sent to Martinique. Meanwhile covers were being franked with 2x1.50 or 3x1F stamps.

♦ 392) Collectors of French Exposition cancels should note that the "Paris Exposition/Beaux Arts" postmark first used at the Beaux Arts Expo in 1900, was used again at various expos every year or two until about 1920, including expos other than Beaux Arts. The original 1900 mark of two circles was still in use to 1911, after which a new mark in single circle replaced it.

♦ 393) In FtR #385 were listed the numbers of the Depts. which have had monographs on their marques postales published. Member Richard Benjamin informs us that there are still more Depts. with monographs: he mentions #s 12, 34, 47, 61, 74, and 83.

♦ 394) Hubert Guyod writes that he has a copy of France Sc. #423 on a reddish-brown paper. Neither Scott nor Yvert et Tellier list this paper shade. On a visit to Yvert et Tellier they informed him that this variety is not uncommon and worth only about 15% more than the normal white paper stamp.



♦ 395) Member G. de Rivasson in his Pro-Phi Vente sur Offres of Dec. 1980 offered a lot of pieces described as "Poste Enfantine," which piqued our curiosity. He tells us these consist of various blocks of imitations of stamps and stationery, P. O. forms, etc., which were put out around 1900-1914 for children's amusement and education. De Rivasson says they are rare and now much sought for by collectors of memorabilia of the Belle Epoque. The stamps are crude imitations, crudely perfed. There are facsimiles of Sage,

Sowers, Mouchon, Blanc, Taxe Duval, Bons de Poste, Mandats, postal cards, letter cards, pneumatic tube cards, colis postaux forms, bank notes, telegram forms, etc. Several examples illustrated herewith. The words "Poste Enfantine" are printed on the forms and stationery so one should not be deceived.



◆ 396) Revenue stamps on cover? Here is a cover, 50c+“210” fiscal grid cancel on front which paid for a money order, insured, by law of 23 Aug. 1871. Some postal cancellations on revenue stamps for same tariff are known, see especially “Paris Stars,” Rochette & Pothion, p. 348.

Simple convenience, not postal charge, accounts for the 10c receipt on the back of this 1875 cover—asking the addressee to pay a debt and get receipt. —J.E.L.



♦ 397) Illustrated is a 1873 cover with pen-cancelled stamps, marked CHARGE, and bearing the ms notation "Art. 13 de l'arrêté du 6 Juillet 1859." Pen cancel on this Siege issue is unusual, and sends us scurrying to the archives to find out why. The law provided that any letter suspected of containing money or valuables, which had not been registered and so paid, was to be taken out of the regular mail and forwarded to the postmaster at the addressed town under a bill of chargement, to be opened in view of the addressee and extra fees collected if it did in fact contain such valuables.—J.E.L.



◆ 398) Under provision of law of 13 June 1866, recipients of foreign telegrams were allowed to forward the message in domestic mail without having to re-transmit over government monopoly lines at telegraph rates. Here are two 1874 examples of "Télégramme privé."—J.E.L. (Top: from Porto-Ferale to Ajaccio, Corsica; bottom: from Marseille to Nantes).

F. & C. P. S. OFFICIAL

President's Letter

Dear Members:—

It is with great sadness that I must report the death of Ira Seebacher, our friend, fellow member and past President, early in February after a long illness. Ira specialized in sports and early air meets, and never ceased to amaze us by his ability to fill the frames at a moment's notice, and present a lecture enjoyed by all. He began collecting these areas long before they became the popular ones they are today, and he always maintained his eye for special and unusual material. Over the years he put together fantastic collections. I remember a most pleasant day at an ASDA show when Ira came along with a typical handful of his sports material. His section on cricket, that incomprehensible British endeavor, consisted of stampless covers from India, circa 1830, dealing with the establishment of cricket teams in that distant outpost. Yes, he had first-day covers too. Of course they were typically Ira—that for the opening of the Baseball Hall of Fame, which by the way he attended, was signed by the players who were inducted that day! Of course his French Olympics material and his French Air Meets collection were first class. I personally benefited from his advice and encouragement as I began my own modest philatelic efforts. I think I speak for all in saying that we enjoyed knowing him and we will sincerely miss him.

And now to other doings of the Society. Don Shannon, our Runyonesque Recording Secretary, has had to step down from this position because of a change in his work schedule. Don's unique style of writing is always a joy to listen to—his minutes often brought levity to ponderous presentations. For his long efforts we thank him. I am pleased to report that our long-time member Gilbert Loisel has agreed to take Don's position, and will be taking our minutes at meetings and joining the Board in its deliberations.

It looks like the *Le Monde* offer (see my letter in Jan. FCP) will fly. Those who have expressed interest will get a request for funds shortly. Those who missed out can try again next year.

Ira Zweifach has completed the design for our long-sought banner. Those present at the March meeting expressed approval of its design, and were in accord with the spending of a few extra bucks necessary to have the Ceres head affixed to its center. The banner will be ready for our banquet which has been set for Saturday May 16th. Hope to see many of you then.

—Ed. Grabowski

Corresponding Secretary's Annual Report on Membership for 1980

Membership as of January 1, 1980	606
Total New Members for the year 1980	103
Reinstatements for the year 1980	26
Resignations for the year 1980	(11)
Deceased members for the year 1980	(3)
Members dropped for the non-payment of dues for 1980	(4)
Net Membership Gain for the year 1980	74
Total Membership as of December 31, 1980	680

Treasurer's Report, France & Colonies Philatelic Society, Inc.

1980

Balance on hand 1/1/80:

Savings Account	\$3,063.47	
Vaurie Fund	9,713.87	
Checking account	3,428.00	\$16,205.34

Receipts:

Dues (incl. \$2,232.94 for 1981)	3,930.65	
Bank Issues	143.00	
Index	26.50	
Glossary	83.00	
Luft I and II	81.00	
Vaurie	2,497.40	
Samples	23.00	
Stone Lozenges	34.00	
Miscellaneous	15.90	
Auction List	6.32	
Auction	178.50	
Bank Interest	915.37	7,935.64
		24,140.98

Expenditures:

Meetings	351.82	
Publications: Philatelist	2,210.64	
Directory	549.00	
Supplement (Vaurie III)	470.00	
Printing and Stationery	88.80	
Administrative:		
Editor's expenses	\$641.28	
Secretary's expense	525.00	
Treasurer's expense	7.57	
Advertising and Memb.	358.90	1,532.75
Exhibitions	250.00	
Banquet	10.53	
Collectors Club Library	178.15	
Bank charges	1.25	
Collectors Club	100.00	5,742.94

Balance on hand 12/31/80 \$18,398.04

Memorandum:

Vaurie Fund (incl. interest)	\$12,808.31
Cash in banks	5,589.73
	\$18,398.04

2/12/81

Beatrice M. Berner, Treasurer

Accepted by Board 2/19/81, Ed. Grabowski

Notices

At the February Board meeting the Treasurer's Report was submitted and accepted unanimously (see herewith).

The date for the Annual Banquet was set for 16 May, 1981. The site will be The Chambertin, 348 W. 46th St., cost \$22 including a drink, entree, wines, lessert. Notify Treas. Bea Berner, 200 E. 62nd St., N. Y. 10021.

At the March Board meeting Gilbert Loisel was appointed as Recording Secretary to fill the term of Don Shannon who has resigned.

The Supplement with this issue of the FCP is a loose 4-page folder illustrating the Numbered Types of French Postmarks to 1876, for your convenience in desk and library reference. The Secretary will have an extra supply in case you need another copy.

The 40-Year Cumulative Index of the Philatelist will be issued as a Supplement to the July Issue.

The new FCPS banner will be ready for display at the Banquet in May.

At the Interpex ASDA Show March 5-8 our booth was well attended by local members; but only a few out-of-towners were around: Albert Schneider (from Paris), Bob Stone, Jerry Massler, Bob Seeke, Clarence Stillions, Ted Proud, John Purvis, John Lisle, and Rick Basini.

Meeting of 6 January 1981

Those of you that liked Six Flags Over Texas will like the full-length European version, "Luxembourg—the French Connection" as told by immediate past-president of the Postal History Society, Robert Danzer. The four frames of stampless items included 1793 Army of Moselle (Gen'l Jourdan), 1814-15 Bastogne with the French Dept. number removed, and an independent strike of TELLIN which is very rare. With the exception of the Revolutionary and Empire occupations, from 1680 to 1980 most of Luxembourg's postal history has been dominated by Thurn & Taxis, Prussia, Belgium, or independence. The French influence, in such matters as style of postmarks, is therefore more remarkable; especially in the pre-stamp period.

With the Prussians occupying the fortress of Luxembourg 1815-1867, the capital was moved to Arlon. While there was a private service (Wirtgen/Recking) and soldiers' mail back to Prussia was allowed, examples were shown; the rest of the country was serviced out of the suburban town of Diekirch. The first adhesives issues 1852 opened a new vista of town cancels, entrepot and route markings, and ambulants, three frames on display here. Until the war of 1870-71, some towns had markings in French and German, sender's choice, e.g. Luxemburg-BHF (bahnhof) is common, Gare de Luxembourg is rare.—J.E.L.

Meeting of 3 February 1981

One of our long-time members, Sigmund Horowicz, has only recently recovered from serious illness (and we're glad to see you looking so perky) and was snookered into showing some of his fine accumulated material on the condition that somebody else would talk about it.

Ed Grabowski did the honors for 3 frames of Colonies General Issues. In addition to the many mint pieces, he pointed out some of the more interesting cancellations—Guadeloupe small-town blue lozenge on 40c Ceres, Chandernagore cachet on 5c Ceres, and a strip of three with Pondichery lozenge. Just as a stamp, Ed noted, the 5c Empire was nice enough, the Senegal cachet cancel was extra; also noted a mint pair of the 30c Ceres, top sheet margin with T. P. control mark.

Snooker-Chairman Zweifach chalked his way through the 5 frames of Classic France, Lauré issue to Sage. The material was a representative sampling of the issues, just enough mint, cancellations, and varieties to whet

the appetite. There was a 4c Lauré Rothschild, a 2c double-whacked "SPÉCIMEN" and a 1c which somebody put in the regular mail (type 16 c.a.d.) in 1872. Nice strip of 4x5F Sage, and a good page of used abroads. The Ceres issue included a 20c Commune print, and two items much to the liking of this reporter—a strip of three, pos. 144-146-146A2 "Grand Cassure" of the 25c, and a superb 1 Sept. 1871 (first day of new rate) cover bearing a 20c Siege and a bisect 10c.—J.E.L.

Meeting of 3 March 1981: The Rich Exhibit and Competition

The annual Rich Competition, which hasn't been the same since 5c first-class postage, was attended by 25 members and guests. They got a modest size, eclair of a show, six exhibits covering as wide a range of interests as shown on any previous occasion when the frames were full and extra material was in the bin room.

The exhibitors were Messrs. Grabowski, Massler, Spiegel, Stone, Vengrove, and Warm. By unanimous consent two exhibits of more than two frames were allowed to mount their entire shows so that the audience as well as the jury could view them. Acting-Secretary Zweifach, Dr. Stempien, and your correspondent were impanelled (if not impaled) with the job of sorting out the awards, while President Grabowski had to run the meeting, take notes, and comment on his own display. Stone will have to make pinochle marriage of our separate notes.

Certificates awarded to: Jerold Massler for two frames of "Monaco, Proofs and Essays," which presented a group of his Monaco proofs in all of their glory. Included were the 1956 Wedding proofs and those from the 1950 UPU issue. The origin, purpose and history of proofs came out in an animated discussion led by Jerry with comments from Bob Stone, Harvey Warm and others. One conclusion seemed certain:—just because something is true for France proofs, does NOT mean the same follows for Monaco's proofs; and to Eric Spiegel for two frames of "France, Bureaux de Passe" the rail-junction sorting-centers, including copies (even a 1c Lauré) socked on the nose; and to Charles Vengrove for two frames, "Type Sage, 1 Up," with careful study of the paper and design subtypes, both for France and the Colonies, and how to tell them apart—which is a good trick with some of the imperfs.

Awards to: Ed. Grabowski for two frames of "One to Five" which are the hours he used to work, the 1c, 2c, and 5c rates for both France and Colonies, on covers showing the tariffs these values were intended to pay; and to Bob Stone for four frames of "Colonies, Navigation and Commerce (Group) Type" a selection of the proofs, printings, forgeries, surcharges, and usages 1892-1907, and mostly on commercial covers from each colony, various rates, special uses, oddities.

Harvey Warm took the Grand Award with his top-notch exhibit entitled "Tales of the Mississippi," which is a detailed study of the postal history of New Orleans and surrounding areas. The exhibit is filled with material in exceptional condition and contains rarities of the first order. It begins in the stampless period with examples from various treaties and rates. Changes in the New Orleans postmark are shown as well as use of the New Orleans carrier post marks. Stamped examples from the three-month treaty period of 1857 are shown. A block of 50, the largest known used multiple, on cover, of the 3c Washington was described, as well as a cover from Vera Cruz arriving during the nine-day period between Louisiana's leaving the Union and joining the Confederacy.—J.E.L., E.J.G., R.GS:

NEW MEMBERS

- 2103 KERMAN, Arnie, P. O. Box 108, Baychester Sta., Bronx, N. Y. 10469
(France: Merson types, FDCs; Air meetings, semi-official stamps and covers. Dealer full time. Philatelic literature)
- 2104 SISMONDO, Sergio, P. O. Box 6277, Sta. "J", Ottawa, Ont., Canada K2A 1T4 (France: used abroad. Classics 1849-1876, mint, used, on cover. Colonies General Issues, mint, used, on cover, cancels, postal history, stamps, covers of individual colonies. Dealer full time. Philatelic lit.)
- 2105 BROWNLOW, Richard I., 909 Humboldt Rd., Brisbane, Cal. 94005
(France all major varieties, mint. Classics 1849-1876, used. Modern France, mint, semi-postals, air mails, booklets, coils, miniature sheets, Franchise militaire, offices abroad)
- 2106 CHRIST, Ms. Lambert, 2043 Cardinal Way, Fairfield, Cal. 94533
(France all major varieties, mint, used, on cover. Classics 1849-1876, ballons montés. Modern France, mint, used, on cover plus varieties. Blanc, Sowers, booklets. Perfins, all perforated stamps on cover and singles. Andorre covers and stamps. Memel, covers and post cards. Colonies General Issues. French Oceania, tahita, Polynesia. Postal stationery of all French cols. mint, used 1882-1918. B'klets Fr. Cols. 1882-1914)
- 2107 DUFFY, William F., 5605 Bristol Court, Alexandria, Va. 22312
(France all major varieties, mint. Classics 1849-1876 used)
- 2108 GALLAGHER, Scott, P. O. Box 42253, Cincinnati, Ohio 45242
(France, used abroad, postal history in general. Colonies General Issues, on cover (especially the Caribbean area). Cancels, postal history, covers of individual colonies)
- 2109 BLOCH, Herbert J., c/o Mercury Stamp Co., 10 East 40th St., New York, N. Y. 10016 (Voted Honorary Membership by Board of Directors)
(German States. Philatelic expertization service, all countries. Dealer, occasional auctions)
- 2110 HARROW, Doris, 70 Sterling St., Beacon, N. Y. 12508
(General collector all issues. France all major varieties, mint. Classics 1849-1876, mint. Dues. Modern France, mint, semi-postals, air mails, booklets. Dues, newspaper, Franchise Militaire, occupation issues, Council of Europe. Offices abroad in China, used. Philatelic lit. Exch.)
- 2111 CAMERON, Jock, 24 The Links Road, #320, Willowdale, Ont. Canada M2P 1T6 (France all major varieties, mint, used. Sowers. Phil. lit.)
- 2112 HOGLE, Reid, P. O. Box 1350, Richland, Wash. 99352
(France all major varieties, mint, used. Modern France, mint, semi-postals, air mails, booklets, coils, miniature sheets. Dues, parcel post, stationery, precancels, perfins, occupations. Andorre, Monaco. Stamps, covers of St. Pierre-Miquelon, French Polynesia, New Caledonia, New Hebrides (Vanuatu), Wallis & Futuna. Philatelic literature)
- 2113 WALSH, Lee, 203 Pine St., Marshall, Ark. 72650
(General collector. France all major varieties, mint, used, on cover. Stampless covers. Classics 1849-1876, mint, used. Dues. Modern France, mint, used, semi-postals, air mails, FDCs. Andorre, Monaco. Colonies General Issues, mint, used. Philatelic literature. Exchange)
- 2114 PERLBERG, Gail, 11 Fifth Ave., Apt. 10-U, New York, N. Y. 10003
(Topical collector, art on stamps. France all major varieties, mint. Philatelic literature)

- 2115 UNWIN, Alexander M., P. O. Box 1686, Bellevue, Wash. 98009
(France all major varieties, mint, used, on cover. Stampless covers after 1815. Department "Marques Postales," Paris "Marques Postales," Maritime posts, railway posts, postal history in general. Classics 1849-76, mint, used, on cover. Sage. Modern France, mint, used, on cover. Dealer part time. Philatelic literature)
- 2116 GABRIEL, Mata H., P. O. Box 9022, Panama 6, Republic of Panama
(Topical collector, music, musicians, instruments. France all major vars., mint, used. Classics 1849-1876, mint, used, on cover. Sage. Modern Fr., mint, used. Semi-postals, air mails, booklets, coils, coin datés, maximum cards, FDCs, miniature sheets. Dues, parcel post, stationery, DeLuxe proofs, imperforates, precancels. Andorre, Monaco, Europa, U.N. Exch.)
- 2117 SHAUGHNESSY, Ralph E., 46 Gale Rd., Weymouth, Mass. 02188
(General collector 20th. France all major varieties, mint. Modern France FDCs, beginning with 1981)
- 2118 QUALITY TOPICAL SUPPLY, P. O. Box 20208, Columbus, Ohio 43220
(Dealer, full time. Philatelic literature)
- 2119 EDISON, Robert B., 9024 Dellwood Dr., Vienna, Va. 22180
(Stamps and covers of Indo-China, Laos, Vietnam, Cambodia, French Offices in China. Philatelic literature. Exchange)
- 2120 DUDEK, Mr. Marion J., 1805 Via Arriba, Palos Verdes Estates, Calif. 90274
(General collector. General France all major varieties, mint. Colonies General Issues, mint)
- 2121 BARNES, A., 1500 Broadway, Suite 1900, New York, N. Y. 10036
(General collector 19th. France all major varieties, mint, used. Classics 1849-1876, mint, used. Air meetings, first flights, crash covers. Monaco, (Exchange)
- 2122 WOLFF, Christopher, 5062 Strathaven Dr., Dayton, Ohio 45424
(France all major varieties, mint. Modern France, mint. Semi-postals, booklets. French Antarctica, mint)
- 2123 PURCELL, Leonard P., Penas 172, Pedregal De San Angel, Mexico 20, D. F. Mexico (Andorre, Europa, U. N. Colonies General Issues, mint, on cover. All colonies and territories, major varieties. Covers of individual colonies. Guadeloupe. Exchange)
- 2124 BAVICCHI, John, 26 Hartford St., Newton, Mass. 02161
(France all major varieties, mint, used. Classics 1849-1876, on cover. Modern France, mint, used. Semi-postals, air mails, dues, parcel post. Offices abroad. CFA. Saar. Colonies General Issues, mint, used. All colonies and territories major varieties. Dealer, part time. Mail sales)
- 2125 ANDERSON, Samuel S., 1131 "B" St., Eureka, Calif. 95501
(France, postal history in general. Classics 1849-1876, mint, used, on cover. 1870-1871. Cancellations. Modern France, mint, used, on cover. Air meetings, first flights, crash covers, Artist's proofs and color trials. Monaco. Philatelic literature. Exchange)
- 2126 WILLIAMS, Charles G., Jr., 748 Cabin Hill Dr., Greensburg, Pa. 15601
(General collector 19th & 20th. France all major varieties, mint, used. Classics 1849-1876, mint, used. 1870-1871 issues. Sage. Modern France, mint, used. Semi-postals, air mails. Exchange)
- 2127 GROSSBLAT, David, P. O. Box 26387, Phoenix, Ariz. 85068
(Andorre. All phases of collecting relative to Monaco. Philatelic literature relative to Monaco only. Exchange)

- 2128 SCOTT, Richard E., Jr., 1207 Corbett Lane, Orlando, Fla. 32806
(Topical collector, women's gymnastics, Lemurs. Stamps and covers of French Polynesia. Tunisia. Philatelic literature)
- 2129 JAMET, Mrs. M., 10 Rue D'Alger, F75001-Paris, France
(Postal history of France and Colonies)
- 2130 ROSS, Paul D., 7 Evelyn Lane, Syosset, N. Y. 11791
(General collector 19th & 20th. France all major varieties, mint, used. Classics 1849-1876, mint, used, dues. Modern France, mint, used. Sowers. Semi-postals, air mails, booklets, coils, miniature sheets, telephone-telegraph, dues, parcel post, newspaper, Franchise Militaire, revenues expositions, special and temporary bureaux, precancels, occupations. Offices abroad, CFA, Saar, Europa. Colonies General Issues, mint, used. All colonies and territories major varieties, past colonies. Philatelic literature. Exchange)
- 2131 SIMS, Thomas C., 11105 W. Allendale Dr., Arvada, Colo. 80004
(General collector 20th century)
- 2132 DERTZ, Raymond, 4447 Burgundy Pl., Lisle, Ill. 60532
(Indo-China. French Offices in China)
- 2133 VAFIAS, Constantine G., 7001 Ridge Boulevard, Brooklyn, N. Y. 11209
(General collector all issues)
- 2134 PURVIS, John L., 55 White Horn Dr., Kingston, R. I. 02881
(General collector all issues. France all major varieties, mint, used, on cover. Exchange)
- 2135 WALLIS, William W., P. O. Box 1241-D, Rahway, N. J. 07065
(General collector to 1946. Topical collector, U.N. of the World. France all major varieties, mint, used. Colonies General Issues, used. All colonies and territories major varieties. Philatelic literature)
- 2136 TERRILL, James L., 11 Grove Lane, Greenwich, Conn. 06830
(General collector all issues)
- 2137 VOSHELL, Steven Williams, 340 S. 15th St., Apt. 2 Philadelphia, Penn. 19102 (Colonies General Issues, used, Africa only. All colonies and territories major varieties. Africa postally used only. Phil. lit. Exchange)

CHANGES OF ADDRESS AND CORRECTIONS

- 1701 KAPPEL, Robert G. W., 11661 Anderson Way, Loma Linda, Calif. 92354
- 1633 NATHANSON, H. M., 55 Harbour Sq., Apt. 3012, Toronto, Canada M5T 2L1
- 1846 HARRIS, Karl A., 341 Cobblestone Ct., Chapel Hill, N. C. 27514
- 1736 ARELLANO, Refugio, Jr., 4553 Grace Ave., Baldwin Park, Cal. 91706
- 1312 WALSKE, Steevn C., 261 Commonwealth Ave., Boston, Mass. 02116
- 1500 HOF, Frederic C., 4516 Squiredale Sq., Alexandria, Va. 22309
- 1959 MONTELLO, Lawrence J., P. O. Box 163, Brainerd, Minn. 56401
- 1717 PIGLOWSKI, Robert L., 37 McNaughton Ave., Cheektowaga, N. Y. 14225
- 2100 WESEMAEL, François, correction of first name
- 2080 REYNOLDS, Hal A., Apartado Aereo 7248, Bogota, Colombia
- 2078 HEPP, George A., correction of spelling of last name
- 2095 CARLIN, Paul H., 17 Janet Lane, Berkeley Heights, N. J. 07922
- 2003 FROMER, Mark, 1605 East 4th St., Brooklyn, N. Y. 11230
- 441 STURZNICKLE, Donald M., 6143 Longmont Dr., Houston, Texas 77057
- 1689 BERGER, Fred K., M.D., 5317 Calle Vista, San Diego, Cal. 92109
- 1575 SHAPIRO, Ronald M., 1501 Hopi Trail, Santa Rosa, Calif. 95404

- 1218 ZIMOWSKE, G. S., Denali Stamp Co., 5114 Tenaya Ave., Newark, Cal. 94560
- 1665 BUCHEIT, Leon J. A., RFD #2, Box 417, Goshen, N. Y. 10924
- 1073 CASTOR, William N., 816 Sheridan Dr., Sault Sainte Marie, MI 49783
- 1931 BASTIEN, Robert, C. P. 232, Beloeil, Quebec, Canada J3G 4T1
- 1051 HARWOOD, Robert W., 239 Kensington Ave., Apt. 301, Westmount, Quebec, Canada H3Z 2H1
- 1819 VALERIOTE, Heather Ross, change name to Heather Ross Mackie
- 1217 VAN DER VLIST, H. W., Schoolkade 31, 1566 KV Assendelft, Holland (France, stampless covers. Entry markings, military posts, maritime posts, railway posts, used abroad, postal history in general. Classics 1849-1876, used, on cover, dues. Cancellations incl. 1870 issues and Alsace, Sage. Reprints. Specimens, Proofs used and especially on cover by rates. Blanc, Merson, Sowers. Tele.-Telephone used and on cover. Parcel post, F.M., Liberation issues, essays, specimen proofs, precancels. Philatelic literature)
- 2018 COE, Joffre, II, Rt. 3 Box 104-C, Hillsborough, N. C. 27278 (Dealer, full time)
- 1075 HURWITZ, Harold, 1821 Tamarind Terr., Coconut Creek, Fla. 33066
- 2062 PARKMAN, Peter, 3118 N. Downer #3, Milwaukee, Wis. 53211
- 1954 MILES, Stephen F., Rt. 2, Box 58A, Siloam Springs, Ark. 72761
- 1420 STEELE, Captain John R., P. O. Box 50101, Midwest City Branch, Oklahoma City, Okla. 73140
- 1725 NALAND, W. H., Box 3385, Bellevue, Wash. 98009
- 2070 HINTERKOPF, J. Peter, 12116 Blue Ridge Ct., Waynesboro, Pa. 17268
- 1330 WHETZEL, Robert D., 711 8th St., Clairton, Pa. 15025
- SALMON, Frank E., 4433 W. Shangri La Rd., Glendale, Ariz. 85304
- 1495 National Postal Museum, Research Library, 180 Wellington St., Ottawa, Ontario, Canada K1A 1C6
- 1961 ROGUE, Richard, Canada "Moved, address unknown"
- 1972 SMITH, Donald, Canada "Unclaimed"
- 1324 PROUD, Edward W., England "Gone Away"

Removed from Mailing List for Non-Payment of Dues as of 1 April 1981

G. R. Case, C. Fodor, J. Kinlder, J. E. Lippmann, A. Monford, R. M. Nossel, L. Sickman, B. Schaffner, D. Shannon, B. Spivaack, R. H. Bellmor, J. M. Blood, E. Braden, R. L. Buse, J. S. Castellano, K. E. Chapleau, K. H. Cohrs, M. R. Colts, M. Corrao, F. S. Eaton, J. A. English, D. Flaar, R. R. Fortier, C. C. Gasta, R. Haas, C. W. Hullinger, H. Hurwitz, R. Imel, C. W. Iser, L. M. Johnsen, L. J. Kellner, R. W. Lancaster, D. Long, R. Maricola, K. R. Moreland, R. C. Murray, N. C. Myers, J. M. Owens, E. Piasecki, S. L. Pompey, D. Raphael, R. G. Reardon, J. S. Riley, R. P. Roloff, M. Rosen, S. Rumsey, F. R. Rusin, M. Scarborough, F. Schman, W. P. Slifer, P. R. Small, J. R. Smith, S. H. Standke, W. E. Steiner, D. L. Taylor, R. J. Thompson, R. R. Volkstadt, E. V. Worley.

P. Augereau, Y. Brolet, A. Duchesneau, R. Hogue, G. S. Keryczynski, M. Lichardopel, F. Sciento, E. W. Proud, D. K. Smith.

Resigned

D. H. Preston B. S. Alder, L. Feder, M. Gandveau, A. Bialos, S. D. Podolsky, G. E. Montrose.

Deceased

Ira Seebacher.