

**MAR 2020**

# **OVERVIEW OF POSTAL STATIONERY OF DAHOMEY**

**with a lil Togo too because I can't resist the palm climber**

Dahomey

40 total issues - I am missing 2  
one of which has a questionable existence

Togo

7 total - none missing

more rare used than mint, but has appearance that they were  
available in colonies

**LETTERCARDS**



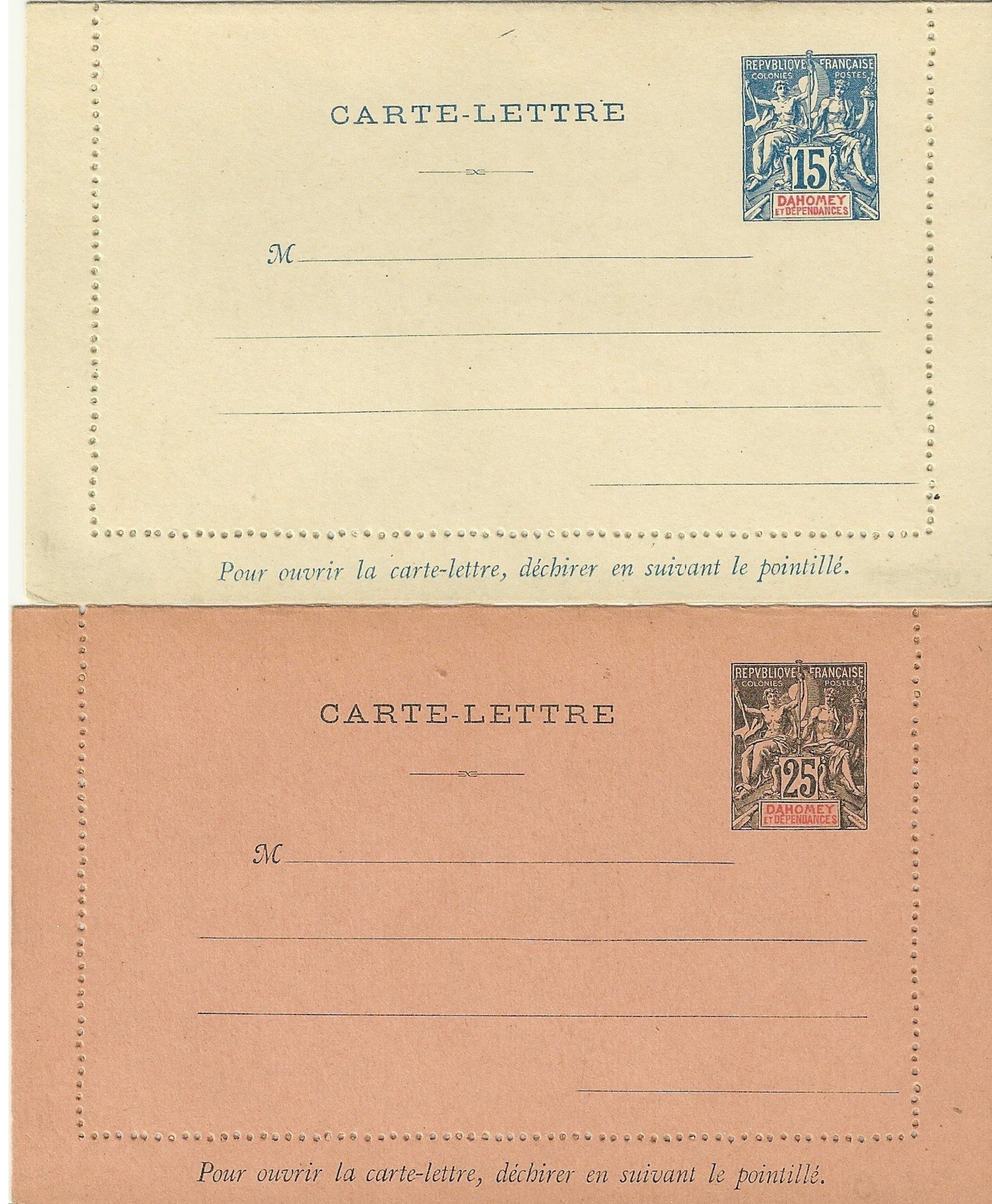
Start off with an attention grabber !

1898-1900

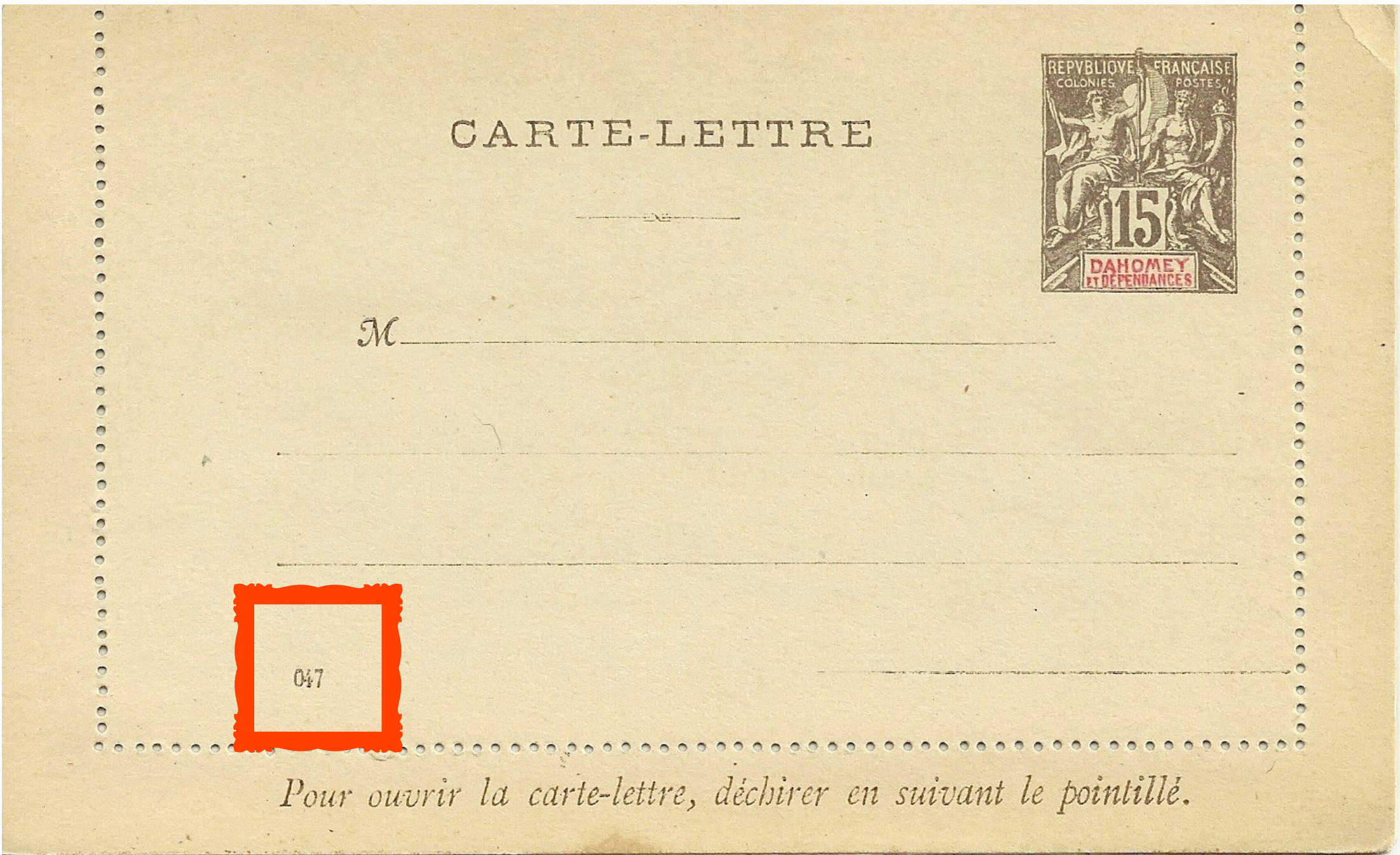
These are only 2 known in these colors.

How do you find these?  
Well...

Provenance :  
Picard  
Dr Mitchell : H&G Catalog  
Wayne Menuz  
Jere Dutt





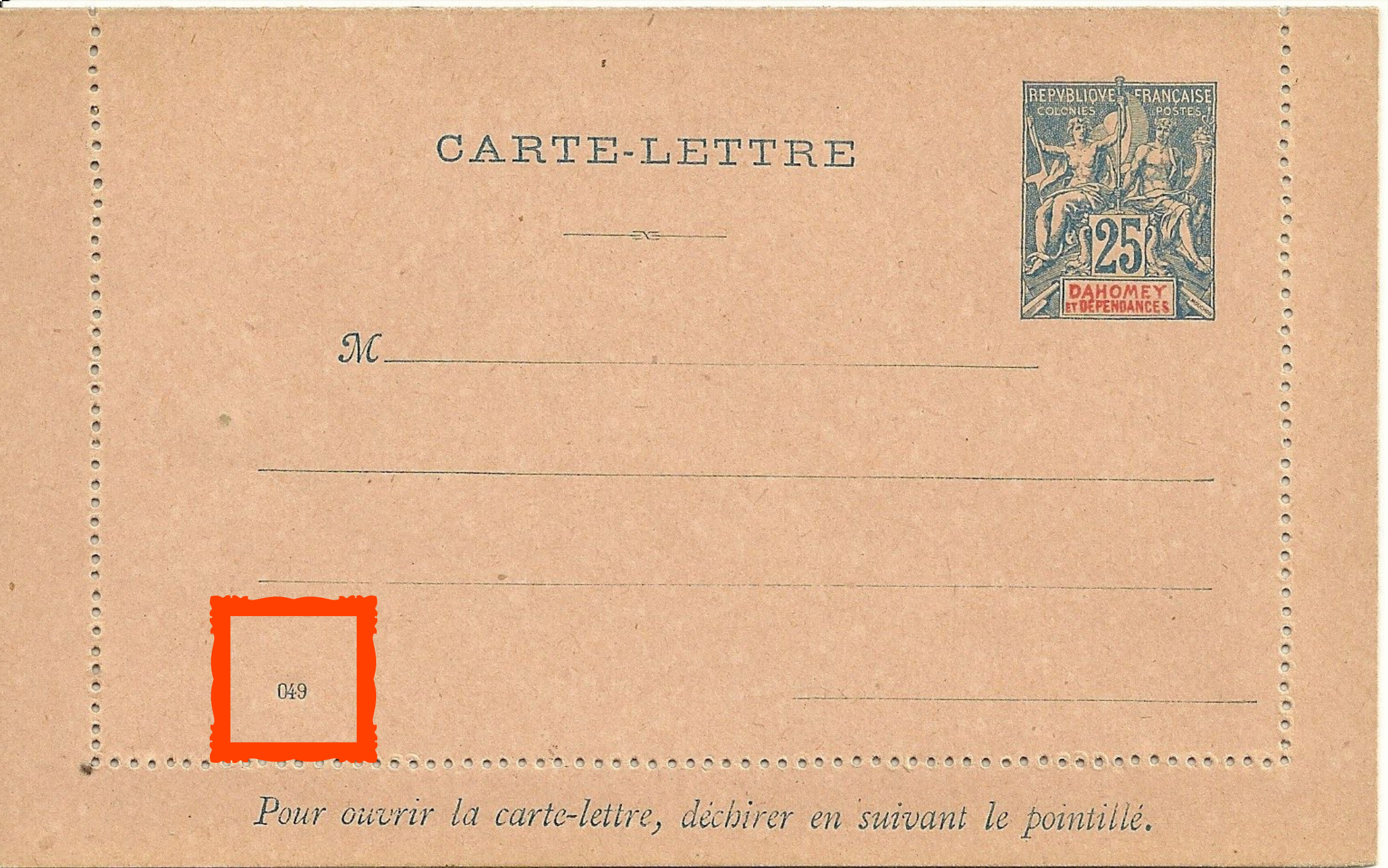


Left 1900

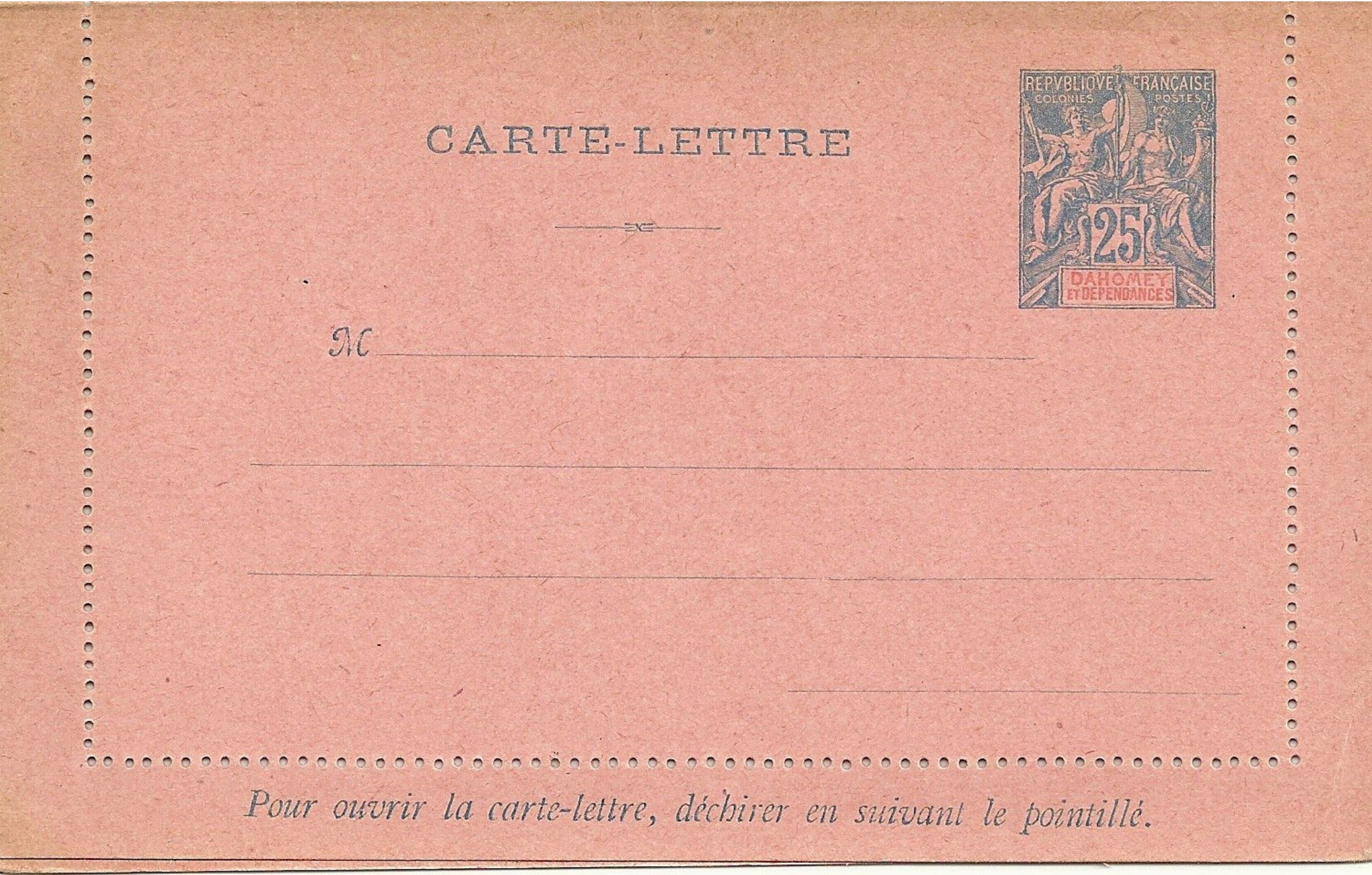


Right 1901

Difference is the  
number marking  
(red)



Both 25c should  
be pink  
not sure if it is  
fade or  
variety

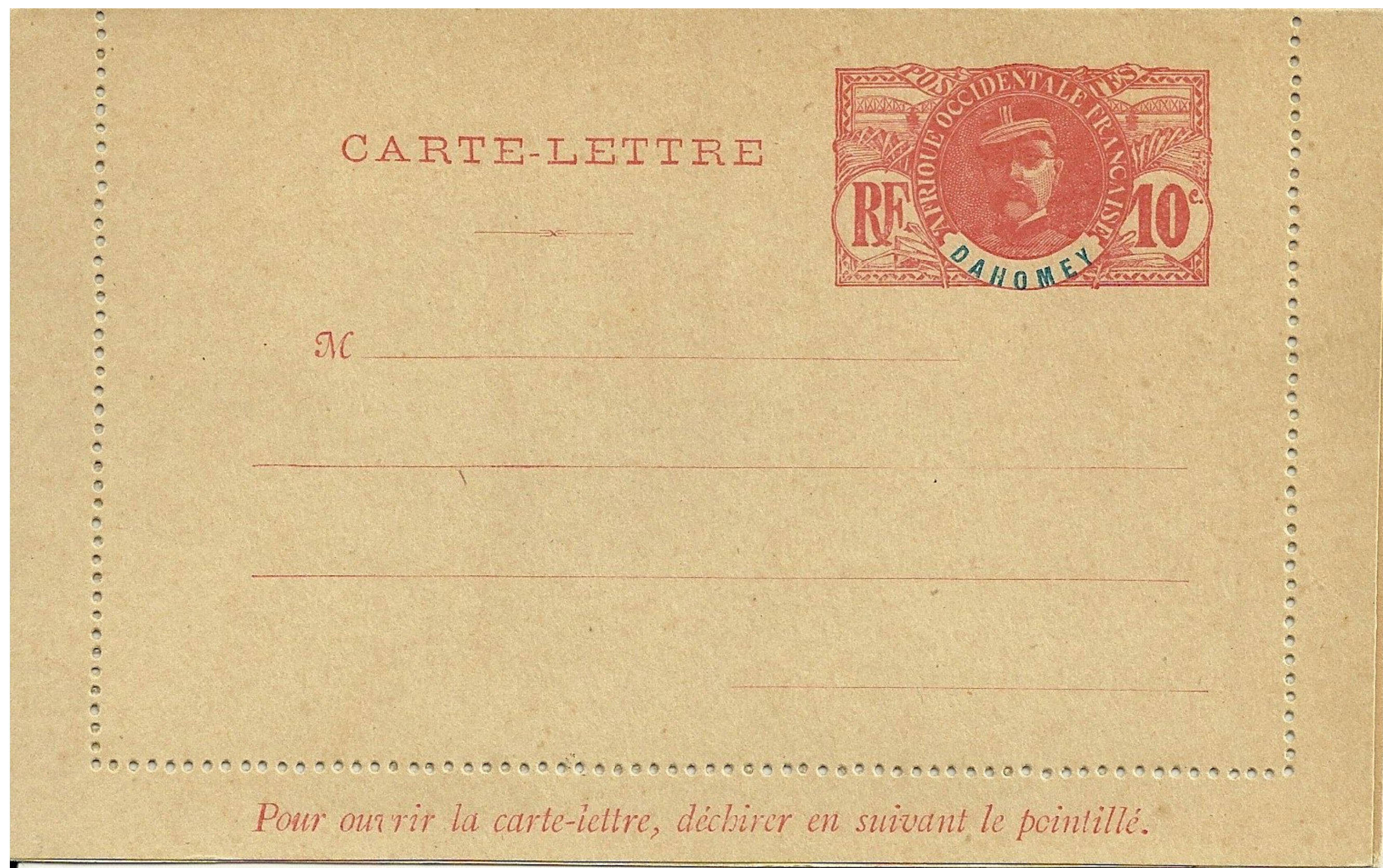




Faidherbe type  
1906

Cotonou to Porto-Novo  
May 13, 1907

Proper postage







10c letter card 1917

Oct 23 from porto nova to Savalou

Contains a letter of introduction for a  
former soldier staying in Dahomey





**POSTCARDS**



# CARTE POSTALE

*Ce côté est exclusivement réservé à l'adresse.*

M



LE

*l'adresse.*



LE

*l'adresse.*



5c - 1917

10c - 1918

15c - 1918



Rate increase April 1, 1920 to 20 centimes

Mailed Nov 20, 1920

Double postage due for the 10c additional





1917

The foreign rate for post cards was 10c until April 1, 1921 when it increased to 30c

Mailed overpaid in Mar of 21

Was an odd time as rates were cheaper to mail  
a foreign card than sending domestic between  
April 1920 and April 1921

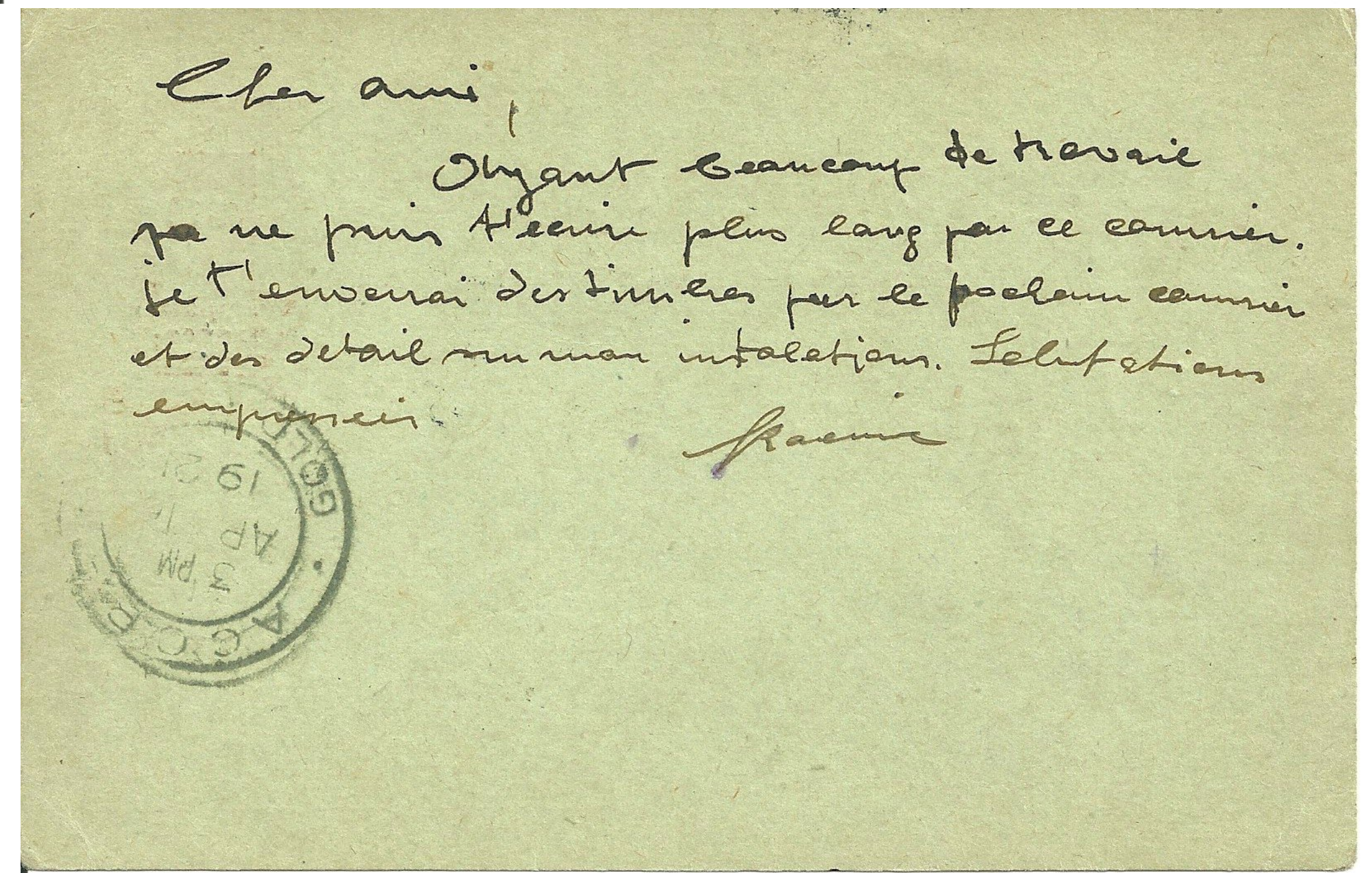




Card issued 1917

Rate increase on April 1, 1921 to 30c and 10c for 5 word

Mailed April 13, 1921  
short paid as it has a full message





**ENVELOPES**

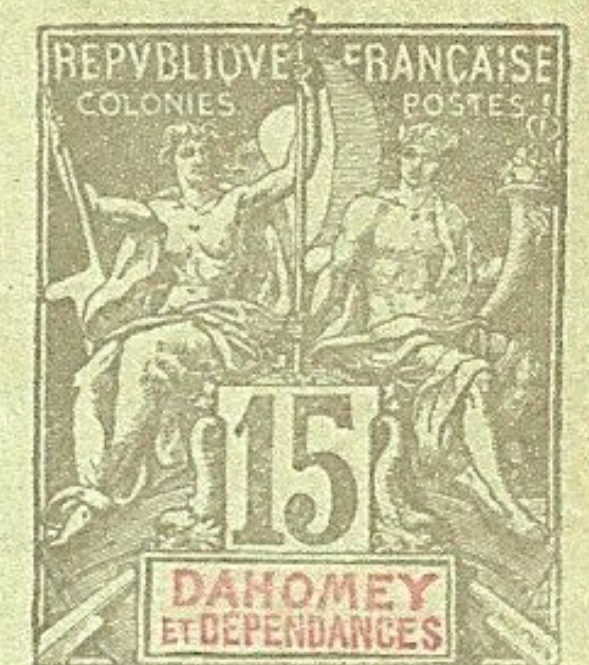
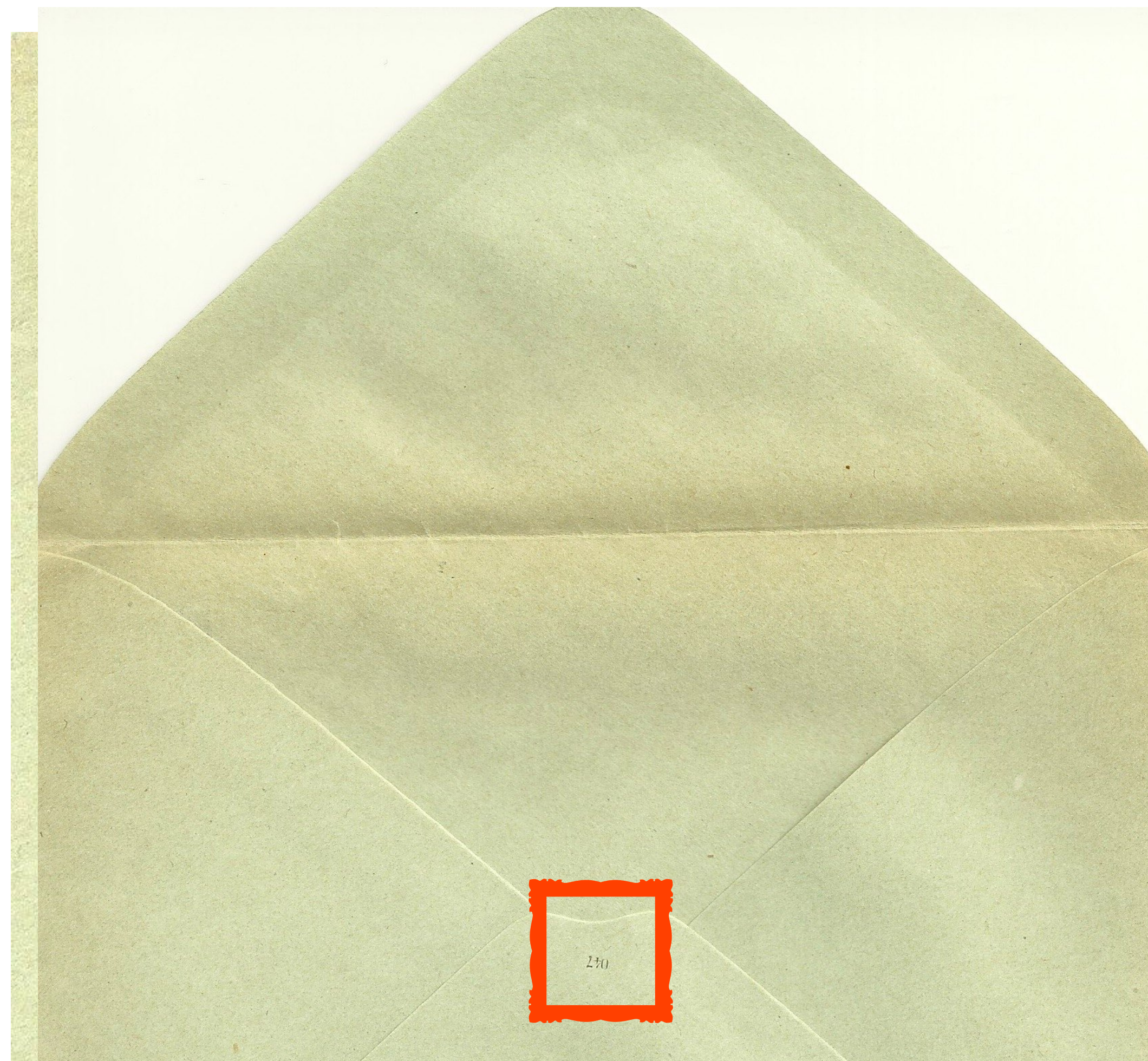


1899  
5c  
107x70mm

1900  
15c & 25c  
Distinguished by  
mark  
(red)

1901  
3 sizes  
both in 15c  
and 25c

116x76mm  
123x96mm  
147x112mm





1906-07

Faidherbe

4 issues

5c 107x70mm  
10c 123x96mm  
10c 147x112mm  
25c 147x112mm

June 23, 1908  
Grand-Popo to Angoulême, France  
proper postage







1916 10c with blue green interior

Rate increase jan 1917 to 15c  
mailed Dec 8 1917 with extra postage



1918 Heavy paper and interior color variety

1 printing in bluish green

1 printing in violet

proper rate to France

July 18, 1919

A 10c was also issued in the same size  
147x112





Thin paper variety

5c -1913

15c - 1917

envelope - 1918

25c postage

25c registration

A 25c 147x 112  
was issued in 1922

A 5c 107x70 in 1924





1917

Cheater page from  
Exhibit

:-)



5c for visiting card rate - all printed with pointed flap.  
107x70cm

Favor cancel Lome June 7, 1922. (left)

Favor cancel Atakpame June 15, 1918. (center)

10c domestic letter rate - 146x112cm Favor cancel Atakpame June 15, 1918.





1921

5c 107x70

10c 147x112

1923

25c 147x112

Last issues of  
French Togo





**THANK YOU!**

**ANY ADDITIONAL INFORMATION, CORRECTIONS, OR IF YOU HAVE ANY OF THIS MATERIAL  
YOU ARE INTERESTED IN SELLING PLEASE DO NOT HESITATE TO CONTACT ME.**

**JERE DUTT : 330-338-7639  
[JERE@DUTTENTERPRISES.COM](mailto:JERE@DUTTENTERPRISES.COM)**