

France & Colonies Philatelist

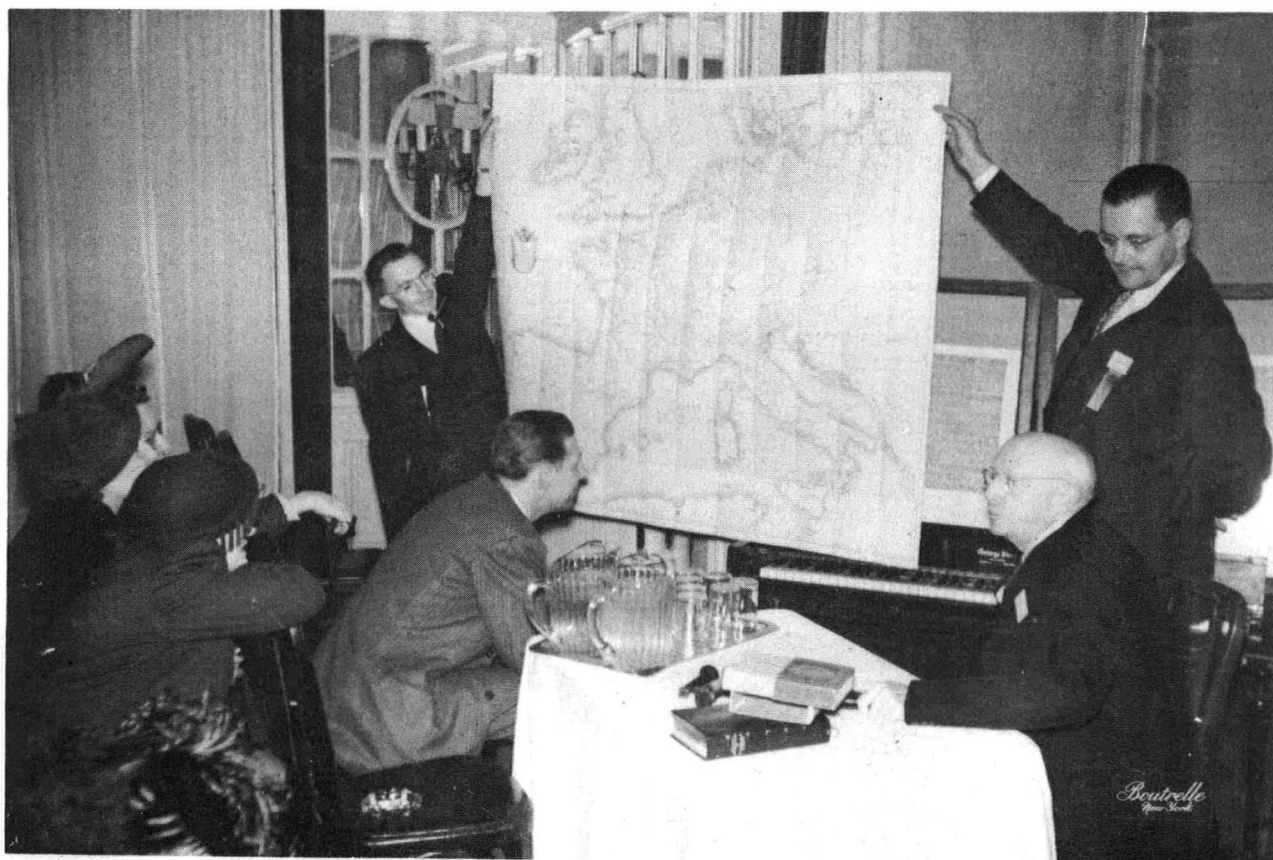


Published bi-monthly by the France and Colonies Group

Secretary: Mrs. Helen A. Stringham, 35 Franklin Place, Montclair, N.J.

Editor: Stephen G. Rich, P. O. Box B, Verona, N.J.

(This number published in February 1949)



October 23, 1948

At the Pre-Centenary Forum, Hotel Lafayette, New York. Dr. Chase talking about the Napoleonic period and its postal material, showing a chart for military use, from that period and probably used by Le Petit Caporal himself.

Left to right: Charles E. Meyer, Robert G. Stone, Dr. Carroll Chase, Brainerd Kremer. Photo by Adrien Boutrelle

Gleanings
Among the Postmarks of Martinique

By Robert G. Stone and Ralph Holtsizer.

(Continuation)

Changes for the portions which
already have appeared.

In No. 37, page 3, the date for the first of the St. Pierre straight lines, that with the Fleur-de-Lis, should be "around 1740."

In No. 37, page 3, the dates for the Fort-Royal boxed type should be "1842-50?" (Question mark for latest date is to be included).

In No. 38, page 6, dimensions of No. 3, the "small double circle," run 24 to 24 mm.

--The Authors

IV. The Later Circular Postmarks, 1879-1948.

About 1879 the variety of postmarks and the number of post offices began to show a marked increase, with a correspondingly greater scope for the collector. Now the material becomes so abundant that collectors can easily assemble a wide range of used stamps and covers, to show nearly all the later varieties of markings. But this period still offers many opportunities to make "discoveries" of minor varieties, to find new records of usages, etc. Very little has had systematic report in the literature.

The authors, therefore, have quite a few additions and changes to make, to Langlois and Bourselet's ("L. & B.") listings. They are not attempting here to illustrate all the minutiae, even those which they have found, because of limitations of space, and specially in thought of the relative unimportance of many variations even from the specialist's point of view.

Naturally, cancellation devices used on large volumes of mail, will soon develop obvious defects or a slightly different aspect. Moreover, in those with dating by movable type, this type may be wrongly set, resulting in odd misspellings, inversions, missing dates, slug marks, etc. We are not concerned with such ephemera in this article. One comes across many examples among Martinique postal markings; sometimes they are useful for expertising purposes. We do however urge that collectors watch for these oddities and fine points. But is would take a book just to report them all-- a task we leave to others.

As far as they go, we shall follow L. & B.'s designations for this group, because many of us collectors are already familiar with them.

The matter of dates of usage of each type at each post office is peculiarly complex, in the usage of Martinique. Partly, this is because of the destruction of many offices by the eruption of Mt. Pelée on May 8, 1902, and their later reopening in most cases. Also, a number of Army camps and small offices were opened and closed, perhaps several times in some cases, according to local political and economic circumstances.

Further confusion may be entailed by another fact: at times certain stations of the Administration of Posts, Telegraphs and Telephones have had no authority to sell postage stamps, nor to accept ordinary classes of mail-- but they were supplied cancellation devices of the same types as were used by the post offices. By collusion or favor, these were sometimes unofficially put onto mail or stamps. Normally, they should be found only on telegrams, telephone messages, bills

and official P.T.T. mail. We have not been able to determine precisely which places have been in that special category. But it seems to us that a few of the "bureaux" listed as post offices by L. & B. were of this type. That fact may explain why L. & B. had not any record of any postmarks for some offices. We believe that this applies to Cérone, Fonds Bouché, Désmarinières, Morne des Esses, La Pelletier, Perriolat, Préfontaine, Rivière Blanche, Terrier, La Tracée, and possibly several more.

By 1941 a number of offices listed by L. & B. as open in 1926, had been closed: Absalon, Alma, Colson, Fonds d'Or, and Tivoli. La Chapelle was closed and opened again. L. & B. fail to note that La Grande Anse, Parnasse, and Vivé, were also destroyed in the Pelée eruption and never reopened. Since 1926, new offices have been established at Bellevue, Bois Boyer, Champ Flore, Ste. Thérèse, and Terres Sainville.

Among the colors of ink used for cancelling, red was very rare and blue very scarce prior to 1878. Beginning that year, the use of blue and purple became quite common at certain offices, during certain periods. Red is occasionally in use, but only from St. Pierre and Fort de France. Tabulation from our collections shows the number of post offices which have at some time used these colors: Black 51; Blue 27; Purple 21; Magenta 3; Red 2; Blue-black 2.

As mentioned in L. & B., in 1879, all at once, about 25 new post offices were established. This marks the beginning of the modern postal era of Martinique, with which this instalment of our article deals.

The types are:

Type A. Double circle, 23 to 24 mm. outside diameter; inner circle of dots; wording in roman capitals.

MARTINIQUE at top, date in three lines in center, office name at bottom, asterisks both sides. (This is the same as our Type 3 of the "Early Dated Postmarks" as listed in F. & C.P., No. 38, p. 6. Here it finds repeated listing because its use was greatly extended in 1879, and continued until 1893 at some places. The few offices existing before 1879 all had this type. But it was the first dated canceller of any sort issued to some of the 25 new post offices opened in 1879: Anse d'Arlets, Basse-Pointe, Le Diamant, François, La Grande Anse, Lamentin, Marin, Rivière-Pilote, Robert, St. Esprit, Ste. Marie, Trinité. We are not certain that Marin and Trinité has this type before 1878 or 1879, as implied by L. & B. and listed by us in Part 2 of this series.

Varieties:

1. SAINT PIERRE instead of St PIERRE in 1880-81; very rare.
2. St PIERRE, with hour of collection in addition to date, 1879-83; often in blue.

Type B. Double circle, 26 mm.

outside diameter; wording in gothic capitals; office name at top, date in three lines in center, MARTINIQUE at bottom, rectangular ornaments at sides. Used at St. Pierre and Fort de France only, 1880-1883, often in blue. Used concurrently with Types A. C. D.



Type C. Double circle, 22 mm. outside diameter; outer circle heavier than inner; wording in roman capitals. Office name at top, date in 3 lines in center, MARTINIQUE at bottom; usually asterisks at each side. This type is attractive for cancellation hunters; it is small enough almost to fit on the stamp and lends itself to nice crisp and legible impressions. Moreover, it was used at many of the small post offices between 1879 and 1893. Many of these offices did not get Type A, and had no other canceller than Type C to use until Type D appeared in 1887 or later.

At some offices Types A and C were used concurrently. There are reasons to consider that all the offices opened in 1879 and earlier were supplied with this type. Only the following, however, are thus far reported:

Basse-Pointe, Carbet, Case-Pilote, Ducos, Fort-de-France, François, Grand-Bourg, Lorrain, Macouba, Marigot, Morne Rouge, Prêcheur, Ste. Anne, Saint-Joseph, Ste. Luce, Sainte-Philomène, Saint-Pierre, Trois-Ilets, Vauclin.

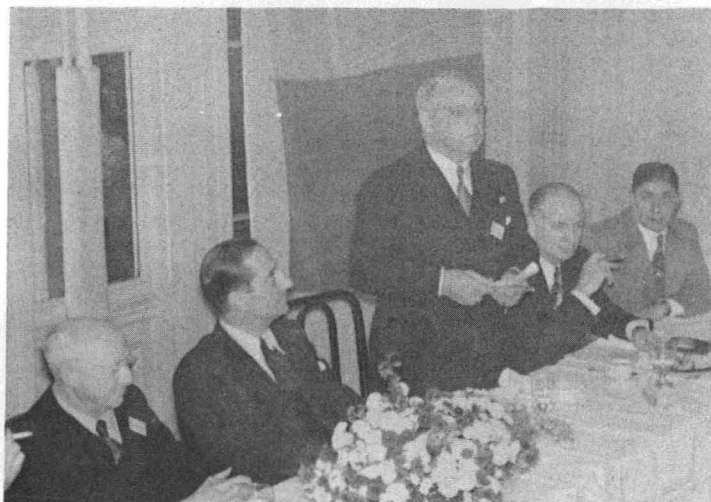
Varieties:

1. Without fleurons at sides (Common).

2. SAINT-PIERRE/date/
CHARGEMENTS
Used 1887-1902
For the special
use of the section
handling underpaid
or unpaid mail.
(As illustrated)



This instalment will be continued in the next number of the F. & C. Philatelist.



The Pre-Centenary Dinner. Oct 23, 1948, at the Hotel Lafayette, and honoring Dr. Carroll Chase. From left: Dr. Chase, consul-General Chancel of France, Toastmaster Chester Smeltzer, John Britt and Henry Goodkind of the Aerophilatelists.



Dr. Chase talking, in the Gerard Gilbert Memorial Forum on French Stamps during the Pre-Centenary Celebration held by the France and Colonies Group Oct. 23, 1948

He is seen in front of his own complete plated panes of the 25c Ceres.

All photographs on this page are by Boutrelle.



At the Pre-Centenary Dinner, October 23, 1948.

The Presentation to Dr. Chase of the inscribed Silver Cigarette Box in recognition by the F. & C. Group of his many services over the years to French Philately. Left to right: President George Weiler of the F. & C. Group; Director Pierre Pelieu of the New York Office of the French Overseas Territories; Brainerd Kremer (standing) and Dr. Chase.



The Celebration was at the centennial of the start of the printing of France's first stamps, issued in January 1849.

These are the McGee family, of Greenbelt, Md. John R. McGee is one of our members, the one who started and still gets printed the numeral cancellation sheets supplied to our members. Thus far, we don't know of any philatelic trends among the charming 3 others of the family.



Flaw in the 2f
Arc de Triomphe
of 1931
(Scott No. 263)



A copy found in
a sales circuit
book by S.G.R.

THE NEW SERVICE

Want or exchange notices; members only; one or two insertions only; no charge. Those replying will please offer only what is asked for here.

Can you send us an interesting item of 100 to 200 words, with or without a picture, from your pet field of French or French Colonies stamps or covers or postmarks? We can always use such "shorts." Editor, F. & C. Philatelist.

Wanted to buy or exchange, used only, only used, in good condition, Reunion No. 53, 17 copies and Reunion No. 54, 5 copies. L. Clemenceon, 32 Monroe St., BH-5, New York 2, N.Y. (Member 19)

Will exchange U.S. for France or Colonies, basis Scott. Otto Hoeffler, 236 Yale Ave., Fresno 4, Calif. (Member 156)

Will trade used France & Colonies and used U.S. Commemoratives for used (only used) French Occupation Germany and Hungary. John F. Kusse, 231 West Linn St., Bellefonte, Penna. (Member 343).

Wanted: French Colonies General Issues, very fine used copies of Scott Nos. 24, 39, 55, 58; also others of same issues and of France. Ask for list. Cash, or if desired, French stamps in exchange. Carl Stephenson, Boardman Hall, Ithaca, N.Y. (Member 45)

Photostat copy of France & Colonies Philatelist No. 1 will complete your file. \$1.25, post free; cash with order only and it takes ten days. Frank L. Browne, 2235 Lake Ave., Baltimore 13, Md. (Member 326)

SECRETARY'S REPORT

Sept. 15 to Oct. 31, 1948

NEW MEMBERS: Welcome --

- 347 Carpenter, Aaron E., 804 Westview Ave., Philadelphia 19, Pa. (No specialty stated)
- 348 Foy, Andrew, 1223 Halsey St., Brooklyn 27, N.Y. (France & Colonies)
- 349 Goerth, Leo F., P.O. Box 6, Cincinnati 7, Ohio. (Postal Stationery; Booklet Panes)

- 350 Hurtubise, Yvon, 1889 St. Clement St., Montreal 4, Que., Canada. (France, Martinique, St. Pierre-Miquelon)
- 351 Izzo, Lewis, 628 Woodward Ave., Iron Mountain, Mich. (French Colonies, used; French Colonies Airmails)
- 352 Reilly, Frank F., 108 Grove St., Hempstead, L.I., N.Y. (France & Colonies Semi-Postals)
- 353 Smith, Lt. Henderson L., Tyndall Field, Panama City, Fla. (France used)
- 354 Thon, Nathan K., Armstrong, Iowa. (French Colonies, especially Somali Coast)
- 355 Waldbott, George L., M.D., 602 Professional Bldg., Detroit 1, Mich. (All Europe).
- 356 Wells, D.H., D.O., 421 South 11th St., San Jose 12, Calif. (France & Colonies)

REINSTATED: Welcome back --

- 217 Elliott, D.L., 2153 West Esther St., Long Beach 13, Calif. (France & Colonies)

APPLICATIONS PENDING:

- de Bretagne, Charles, 372 Main St., Poughkeepsie, N.Y.
- Champlain, Charles E., 64 Wall St., Addison, N.Y.
- de Rivasson, Guy, 5 rue Prebandelle, Angers, France.
- Smeltzer, Chester A., 23 Lake St., Ramsey, New Jersey.
- Teller, Frank G., 5109 Edmondson Ave., Baltimore 29, Md.
- Wolf, J. Irving, M.D., 2825 Devon Drive, Tucson, Ariz.

REINSTATEMENTS PENDING:

- 26 Brooks, Arthur S., R.D. 4, Van Wert, Ohio
- 41 Girard, Daniel P., Teachers College, 525 W. 120 St., New York 27, N.Y.

DECEASED:

- 110 Larimore, Louise D., M.D., Greenwich, Conn.

CHANGES OF ADDRESS (including corrections of any typographical errors in Philatelist No. 40):

- 39 Balme, Joseph P., to 11 North Highland Ave, Abington, Penna.
- 321 Baughman, R.W., to Liberal, Kansas.
- 315 Davenport, H. Thomas, to 2000 East Madison St., Philadelphia 34, Pa.
- 206 Duerr, Paul, to 5 Clinton Sq., Albany, N.Y.
- 338 Fenneberg, H.G., to 302 East Second St., Perrysburg, Ohio
- 10 Wood, Robert L., M.D., to 395 Clinton Ave., Brooklyn 5, N.Y.

DUES FOR 1948-49 are now payable by members up through Roster Number 323.

Resident: \$2.00 Non-Resident: \$1.00

YOUR cooperation in keeping your membership up to date is urgently requested by your Officers and Board of Governors. Please note:

Keeping your dues paid up will ensure your receiving each bulletin promptly after date of its publication. All members paid up through '48 will receive all of Vol. 7, through No. 42.

If you would like to make sure of No. 43 and future issues, send your check or postal note-- now, to

Mrs. Helen A. Stringham, Corr. Secy
35 Franklin Place
Montclair, New Jersey.

DON'T LET YOUR MEMBERSHIP LAPSE---

Reinstatement later will cost you a small additional fee.