



# The 10 Centimes Semeuse (Sower) – Part II

From the Jan Kindler Collection

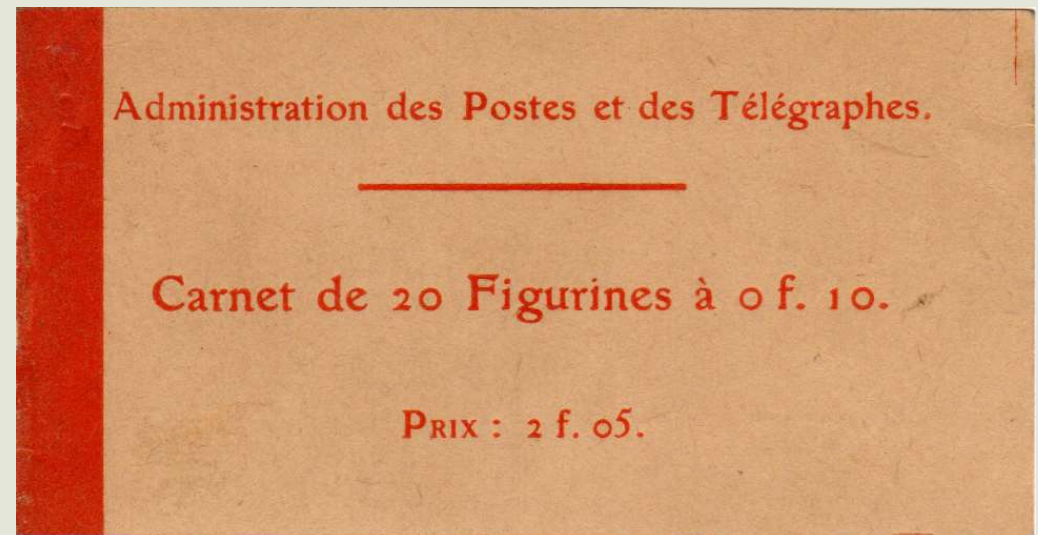
# Table of Contents

- Booklets (Carnets)
- Coils (Roulettes)
- Red Cross Issues
- ANNULE, etc.
- Forgeries, Flim-Flam and Curiosities
- F.M. Overprints
- Surcharges and Overprints for Other Places

# Booklets

## Several issues over time

- First issued 1900
- Five centimes premium over two franc stamp value
- Booklets in this period were all 110 x 60 mm outer dimensions
- Single staple holds double pane in place



## First Booklet



### Interior pane

- Thin lettering
- Catalog lists variety where sower contrasts more with background
- No marginal notations inside

# First Booklet

## Full double pane



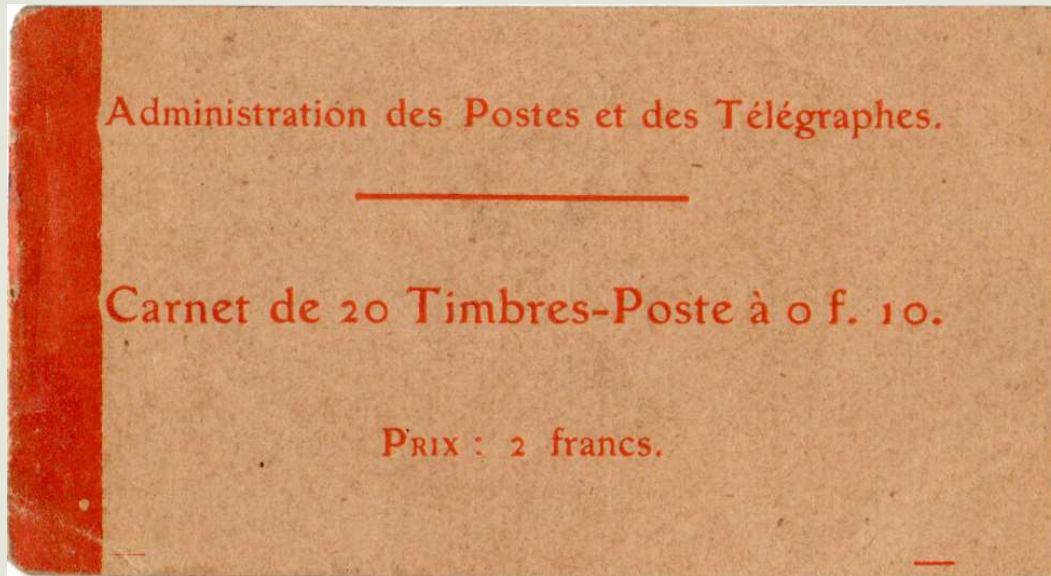
## Second Booklet

### Price reduced

- Handstamp applied to show new two franc price, no longer a premium for booklet
- Issued May 1, 1910
- Same 20-stamp pane inside
- Also a private six-stamp booklet (Belle jardinière) not in Kindler's collection



## Third Booklet



### Reprinted cover

- Two franc price printed on cover
- Retouched design stamps – thicker lettering
- Also (rare) white paper used for stamps

# Third Booklet

## 1910 Thick lettering

- Same single staple to fasten pane in booklet





# Third Booklet

## Few color shades

- Hard to differentiate with scans



Pale red,  
mottled ink



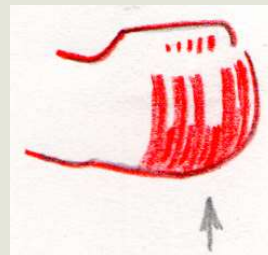
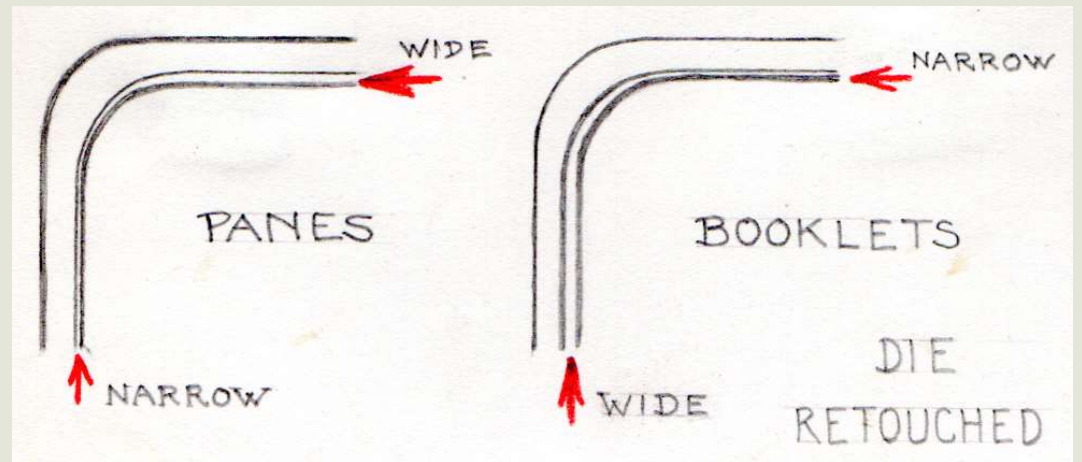
Darker red



# Rare Booklet

## Booklet on GC paper

- Diagram shows how to distinguish booklet or sheet stamp
  - Frame line spacing
  - Shading line in right hand



## Rare Booklet

### Portion of GC paper booklet

- Kindler states only one other piece known
- Frame line spacing narrow at top, wide at sides, especially right side
- Shading line in right hand hard to see, but there is a broken line on all three stamps



## Rare Booklet



### Portion of GC paper booklet

- Frame line spacing and broken hand also show on this pair
- Difficult to see in scan because of paper quality
- Features are not present on GC paper pane shown in Part I of Kindler's collection

## 1918 New Booklet

### Printed on Paper X

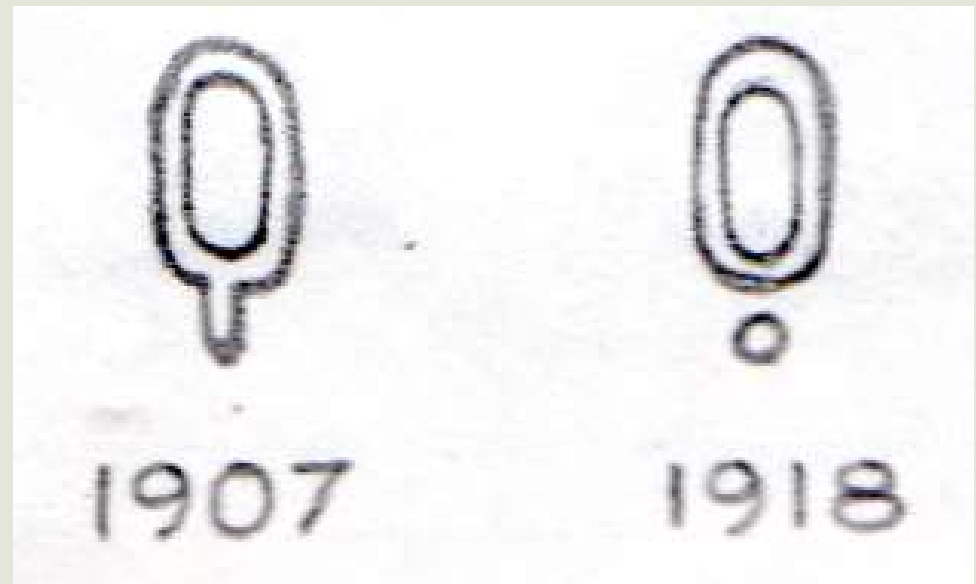
- New die just for booklets (see next slide)
- Paper X acquired just for booklets
  - Very opaque
  - White color, white gum
- Selvage only on left side



# 1918 Booklet

## Detail of new design

- Easiest feature to see is tail of “Q” separate from body



## 1918 Booklet



### Complete booklet

- Thirty stamps in five panes of six stamps each
- No surcharge for booklet

# 1918 Booklet

## Partial sheet

- Printed as three panes per sheet, 144 stamps total
- Each pane was three across, 16 rows (48 stamps)
- Note holes in selvage lined up with each row





# 1918 Booklet

## Partial sheet

- A few sheets were sold to the public
- These were broken up and sold
- Philatelists could then determine how the stamps were printed for the booklets



# Table of Contents

- Booklets (Carnets)
- **Coils (Roulettes)**
- Red Cross Issues
- ANNULE, etc.
- Forgeries, Flim-Flam and Curiosities
- F.M. Overprints
- Surcharges and Overprints for Other Places

# Coils

## Limited issues

- Perforated on all four sides
- Machine-cut vertically
- Strips of six or more “prove” coil
- Maximum is 15 stamps in column
- Fragile perforations!!



Strip of 12



Minimum needed to prove it is a coil strip

# Coils

## Couple of nice collectibles

- Used coil strip of six



- Coil leader strip from 600 stamp roll (note that it is perforated on top and bottom, "sides" of enclosed coil stamps)
- Approx. 5.75" (14.5 cm) long, implies diameter of coil was a bit more than 1.75" (4.5 cm)



# Coils

## A Rarity

- Remember sheet stamps are printed in six panes of 25 stamps, two across and three tall
- Selvage between panes
- This gutter is coil issue – six stamps tall and two millésimes in gutter



# Coils

## Another Rarity

- Bottom rows of stamps printed as coils.
- Plates adjusted to print stamps in panes of 75 (5 x 15),
- Results in two extra rows at bottom rather than between panes



# Table of Contents

- Booklets (Carnets)
- Coils (Roulettes)
- **Red Cross Issues**
- ANNULE, etc.
- Forgeries, Flim-Flam and Curiosities
- F.M. Overprints
- Surcharges and Overprints for Other Places

## Red Cross Issues

### Temporary overprint

- 600,000 printed
- Issued August 18, 1914, fifteen days after Germany declared war on France (Spink/Maury 2019 seems to have this stamp and the next reversed)
- Withdrawn October 1918
- First French semi-postal



Only millésime



## Red Cross Issues

### Temporary overprint

- Thin five variety
- Several other cataloged varieties
  - Paper
  - Inverted surcharge
  - Double perforations



Normal



Thin "5"

## Red Cross Issues



### Redesign

- Issued September 1914
- In use through 1917 (Spink/Maury says October 1918)
- Second French semi-postal
- Proceeds went to Red Cross

## Red Cross Issues

### Printed for three years

- Unknown quantities printed
- Millésimes for each year



## Red Cross Issues



### Redesign

- In 1916 a few sheets printed on light yellow version of GC paper
- Considered very scarce, not catalogued separately in Spink / Maury

## Red Cross Issues



### Booklet

- Prepared only from redesigned stamps, not temporary surcharges
- Stamp vignettes are slightly wider and taller than sheet stamps

# Red Cross Issues

## Booklet pane

- Unknown quantity printed



# Red Cross Issues

## Booklet pane stamps

- January 23, 1916
- Probably from husband to wife
- Beausoleil, France, is a bedroom community for folks who work in Monaco



# Table of Contents

- Booklets (Carnets)
- Coils (Roulettes)
- Red Cross Issues
- **ANNULÉ, etc.**
- Forgeries, Flim-Flam and Curiosities
- F.M. Overprints
- Surcharges and Overprints for Other Places



# ANNULÉ, etc.

## Not issued to the public

- Experimental paper
- Not perforated or officially sold to the public



Thin, experimental paper



ANNULÉ, etc.



### More imperforate examples

- Came to public through unauthorized leaks from PTT printing plant

ANNULÉ, etc.

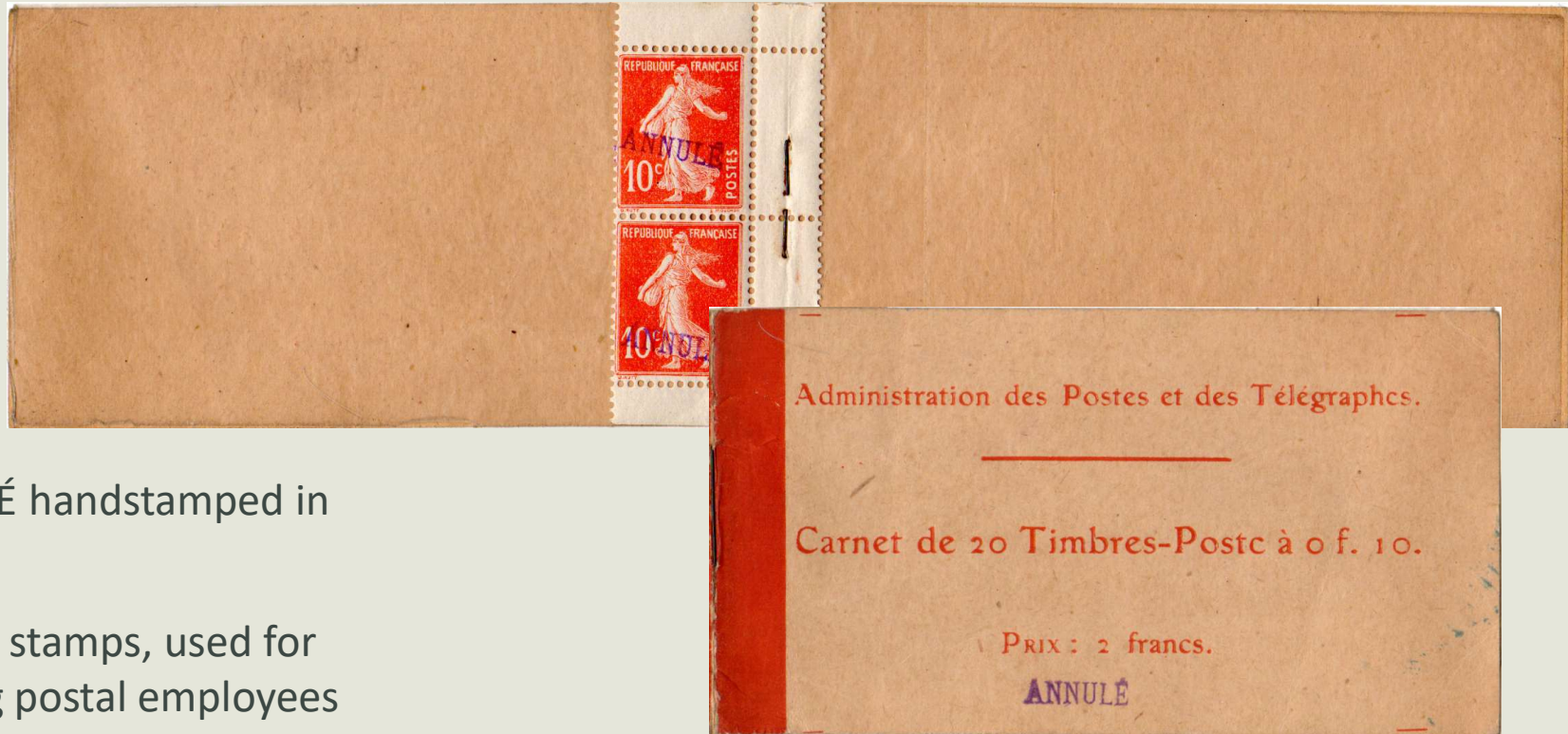


### **ANNULÉ (canceled) overprint**

- Overprinted in 1911
- Used at postal school to train postal employees
- Overprinted again in 1923 but 10 centime Sower no longer current, so not included

# ANNULÉ, etc.

## Booklet

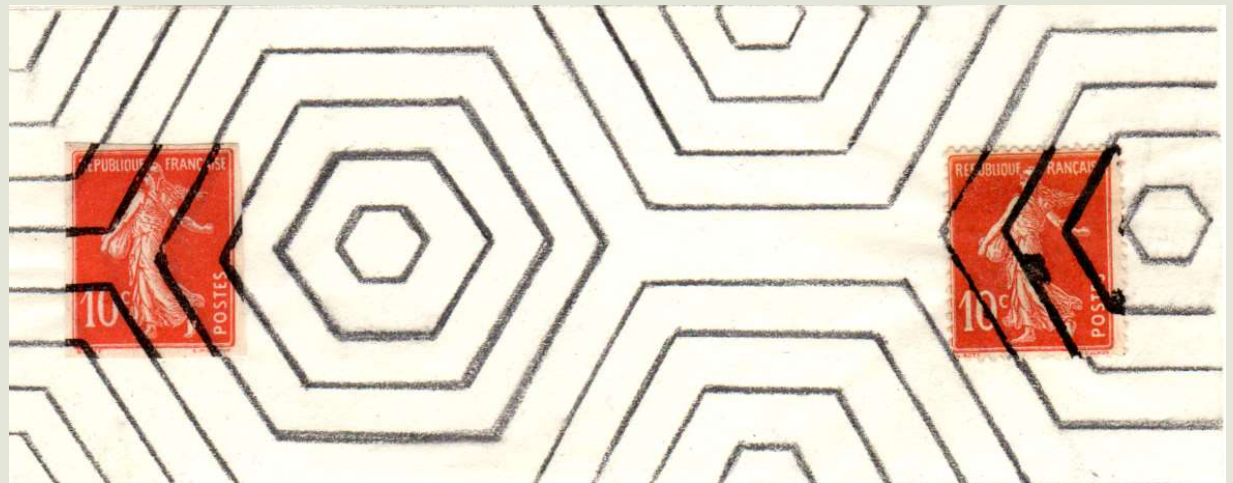


- ANNULÉ handstamped in violet
- As with stamps, used for training postal employees

# ANNULÉ, etc.

## Marked for destruction

- Concentric hexagon used by government to cancel defective stamps
- Intended for burning at Bank of France



On bluish paper that didn't scan well

ANNULÉ, etc.

### Marked for destruction

- Colors not quite true, but definitely not the correct color for this stamp



# ANNULÉ, etc.

## Postage due

- Handstamped with “T” in triangle indicating a “taxe” is due
- Not issued to public
- Authorized in 1917 in a few offices as result of wartime emergency / shortages



# Table of Contents

- Booklets (Carnets)
- Coils (Roulettes)
- Red Cross Issues
- ANNULÉ, etc.
- **Forgeries, Flim-Flam and Curiosities**
- F.M. Overprints
- Surcharges and Overprints for Other Places



# Forgeries, Flim-Flam and Curiosities

## Pseudo thin line

- 1916 variety called “pseudo thin line” variety
- Probably just inking, but still curious



True thin line



Pseudo thin line



Normal 1916 printing

## Forgeries, Flim-Flam and Curiosities

### Postally used color essay

- Known color essay, “raspberry” hue
- Perforated by government
- Should have hexagon destruction cancel, then burned
- Probably stolen, used in mail
- Paste remains on reverse
- Partial “192\_, 2 – 1” CDS on face



## Forgeries, Flim-Flam and Curiosities



### Red Cross overprints

- All doubled overprints were privately made
- There is a recognized inverted overprint but not doubled

## Forgeries, Flim-Flam and Curiosities

### F.M. on thin line stamp

- These overprints only authorized on thick line stamps
- Has appearance of rubber stamp, not metal
- Also not straight



## Forgeries, Flim-Flam and Curiosities



### Lorulot forgeries

- At least five different forgers attacked this stamp
- Lorulot prepared his in 1912
- He was an anarchist, arrested in his home with 30,000 stamps
- Sentenced in 1914 to six months in prison

## Forgeries, Flim-Flam and Curiosities

### Another Lurolot forgery

- Giveaway is line perforations rather than comb
- Also less shading in Sower
- Good description of forgeries at [Classic Stamp Forgeries: France "Semeuse" Sower](#)



## Forgeries, Flim-Flam and Curiosities



### Encased stamps

- As in American and Spanish civil wars, used as emergency currency in WW I
- Presumed “rubbing” of reverse – encased postage glued to page
- More than one type exists

## Forgeries, Flim-Flam and Curiosities

### Flim-flam

- Fantasy surcharge allegedly for use in Guadeloupe, West Indies
- French term, if used, would have been “Antilles”





## Forgeries, Flim-Flam and Curiosities



### Curiosity

- Essay overprint prepared in 1915 in anticipation of the rapid recovery of Alsace-Lorraine, the principal war aim of France in WW I
- Never issued, probably because the war continued far longer than expected
- France annexed Alsace during the interim between WW I and WWII

## Forgeries, Flim-Flam and Curiosities

### Cinderella

- Stamp reduced to about 8 x 10 mm, glued on larger “stamp,” about 22 x 50 mm
- Sold to raise funds to benefit blind soldiers



## Forgeries, Flim-Flam and Curiosities



### Curiosity

- Prepared by the Galeries Lafayette
- Sold as souvenir or as postage to mail a letter or postcard
- Galeries Lafayette is now a great enclosed shopping mall in Paris

# Forgeries, Flim-Flam and Curiosities

## Bisect

- June 12, 1920, from Clement-Ferrand to Geneva, Switzerland
- Paid correct 25 centimes letter rate
- Went through postal system, no postage due assessed



# Table of Contents

- Booklets (Carnets)
- Coils (Roulettes)
- Red Cross Issues
- ANNULÉ, etc.
- Forgeries, Flim-Flam and Curiosities
- **F.M. Overprints**
- Surcharges and Overprints for Other Places

## F.M. Overprints

### Military Franchise stamps

- Also applied to lined sower stamps
- Not required because soldiers could just write “F.M.” on their letters
- First prepared in 1907, last used in 1929



# F.M. Overprints



## Millésimes

- Printed each year 1907 through 1916 except 1909

# F.M. Overprints

## Varieties



Imperforate



Pair with fading "S" in POSTES



Inverted overprint





# Table of Contents

- Booklets (Carnets)
- Coils (Roulettes)
- Red Cross Issues
- ANNULÉ, etc.
- Forgeries, Flim-Flam and Curiosities
- F.M. Overprints
- **Surcharges and Overprints for Other Places**

## Surcharges and Overprints for Other Places

### Castellorizo

- “Occupation Navale Française”
- Authorized in 1920 by order of the naval administrator
- Occupied by French in 1915, ceded to Italy in 1921
- Handstamp version frequently faked
- All French overprints considered speculative



## Surcharges and Overprints for Other Places



### Cilicia

- Ceded to France after WW I, then French Syria, then to Turkey (1923)
- Several 1920 printings
- First issue – thin “O.M.F.” and 20 PARAS on one line

## Surcharges and Overprints for Other Places

### Cilicia

- Second 1920 surcharge
- Thicker “O.M.F.”
- “20 PARAS” on two lines



#### Type I

- 200,000 printed
- Reported difference is 2 mm spacing
- Spacing appears different on left and right stamps



#### Type II

- 400,000 printed
- Reported difference is 1 mm spacing

## Surcharges and Overprints for Other Places



Type I inverted



Wrong value

"Cilicie" left justified

Inverted

### Cilicia

- Several errors resulted
- 10 para error exists only inverted

## Surcharges and Overprints for Other Places

### Cilicia

- Third 1920 surcharge
- “SAND. EST” added for “Eastern Country” or Sandjak
- Prepared but never issued



## Surcharges and Overprints for Other Places

### Levant

- France was one of six powers granted post offices in Ottoman Empire
- Open 1812 through 1923 except during WW I
- These stamps surcharged in 1920



## Surcharges and Overprints for Other Places

### Levant

- Unrecorded overprint variety
- Vertical spacing is 1 mm narrower,
- Width of “20 PARAS” is  $\frac{3}{4}$  mm narrower





## Surcharges and Overprints for Other Places

### Levant

- March 26, 1923, handstamped provisional issue
- Authorized by Consul General Santi
- Shortage of stamps, in use five days
- New stamps arrived March 31



## Surcharges and Overprints for Other Places

### Memel

- Detached from Germany by Treaty of Versailles (1919)
- Allied Powers commission governed until 1923
- Lithuania forcibly occupied
- Became part of semi-autonomous district of Lithuania in 1924



1.4 million stamps printed in Paris

Issued July 7, 1920

## Surcharges and Overprints for Other Places



### Memel

- April 1921
- Additional surcharge applied in Memel

## Surcharges and Overprints for Other Places

### Memel

- April 1922
- 143,000 stamps prepared in Paris
- Part of long set reflecting hyperinflation
- “MEMEL” italicized



## Surcharges and Overprints for Other Places

### Morocco

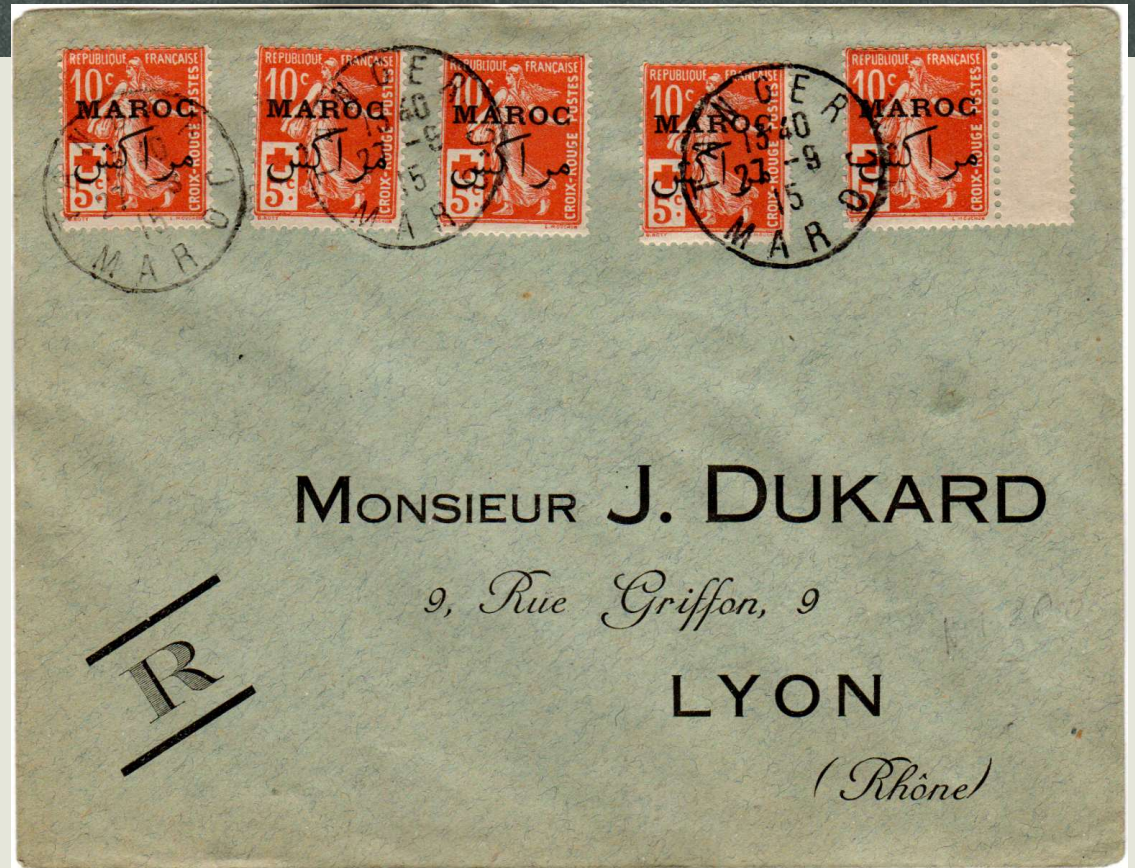
- Redesigned Red Cross issue
- Issued September 13, 1915
- Demonetized April 1, 1921
- Intended for simple letters and postcards



## Surcharges and Overprints for Other Places

### Morocco

- September 27, 1915, two weeks after issue
- Tanger to Lyon
- Not handled as registered, may not have gone through the mail
- Quite possibly philatelic



## Surcharges and Overprints for Other Places

### Syria

- Created after WW I
- French occupied for 2 years
- French Mandate from 1922 to 1934

Type I

9,000 printed, issued 21 Nov 1919

“T[erritoires] E[nnemis] O[ccupés]”



## Surcharges and Overprints for Other Places



Type II

May 1920



### Syria

- Second type printed locally
- Occupation Militaire Française, “Syrie” added
- Handset plate
- Many minor varieties resulted (tilted “2” shown here)



## Surcharges and Overprints for Other Places

Syria

Type III

Misplaced surcharge



## Surcharges and Overprints for Other Places

### Syria

- Type III issued November 21, 1920
- 15,000 printed
- (Scott shows this issue earlier than Type II)



## Surcharges and Overprints for Other Places



Type IV

Millésime

### Syria

- Type IV prepared locally, issued 1921
- Again, careless plate preparation and printing
- Many varieties resulted

## Surcharges and Overprints for Other Places

### Syria

- Type IV errors



Double surcharge



Inverted surcharge



Inverted "S" in "CENTIEMES"

## End of Part II

Next will be postal history and may include other interesting items as they appear in the cartons

Main resource:

Spink/Maury 2019 Catalogue de Timbres de France

- Any questions or comments at this point?
- Remember that a scan of Kindler's album is available on our website  
[Sower Album.pdf](#)  
 [\(franceandcolonies.org\)](http://franceandcolonies.org)



# The 10 Centimes Semeuse (Sower)

From the Jan Kindler Collection